



THE LILYDALE PROGRESSIVE

Inside this issue:

<i>Lilydale RSL</i>	2
<i>Mary Walsh centre News</i>	
<i>Senior Citizens</i>	4
<i>Neighbourhood Watch</i>	5
<i>Health Notes</i>	6
<i>History Item</i>	7
<i>Swimming Pool Hours</i>	8
<i>Lions Club</i>	
<i>Lilydale Pony Club</i>	9
<i>Football Club</i>	
<i>Classifieds</i>	10
<i>Scarecrow in the Vineyard</i>	
<i>Enter the Pearly Gates</i>	
<i>Lilydale Online Access Centre</i>	11
<i>Community Carols</i>	12
<i>Optimist s Pessimist</i>	
<i>A Parents night before Xmas</i>	13
<i>Community Notice Board</i>	14
<i>Calendar</i>	15
<i>Recipe - Panna Cotta</i>	16

Progressive Deadlines

Articles for inclusion can be left at the Lilydale Pharmacy or e-mailed to lily_progressive@yahoo.com.au by the following dates:

2008

January 25th

February 22nd

March 28th

April 24th

May 23rd

June 27th



Editorial

A glance through the years Progressive gives lie to that saying we hear quite often "Nothing every happens in Lilydale".

If you have been collecting your Progressive from your favourite distributor and reading it thoroughly, as we hope that you do each month, here are some of the things that have informed you, amused you, made you happy, made you a bit sad, made you wish you'd read the last one because you missed out on going to something (ha!) excited your interest, made you shake your head, gave you a belly laugh, made you want to write to the Editor but you weren't game (?) here is a recap of the year.

Police Reports:

Thanks to Neighbourhood Watch Reports: We had hay bales stolen (make sure you get them in early this year), electric fence units, wire, vehicles broken into, 3 assaults and various minor misdemeanors, vehicles hanging around where they shouldn't be, vigilant neighbours make Neighbourhood watch work.

The Pharmacy has kept us informed on various remedies and ailments: Snake bites, asthma, hay fever (might have something to do with the stolen hay bales), sinus, Vitamin D, fighting fat, wound care etc.

We have reported on water restrictions, road closures, bridge works, log truck movements, council elections, federal elections.

There have been some different occasions recorded in the pages: Lilydale CWA's 68th birthday for instance, the inclusion of a swatch onto the Memories are made of This Quilt, the Pony Club State eventing

championships, a 'backyard blitz', Lions Change over dinner, numerous AGM's with changes to office bearers, etc, etc.

If you have read the Recipes page, you might have needed to find the edition with the 'fighting fat' health notes! But we did have some good fat free ones too! Spinach Pies, Bread (uses of), Bicarb Soda (uses of), Cream of Veggie soup, Irish Soda Bread, Slow roasted Greek Lamb, Low fat Salad Dressing to name a few.

There were heaps of 'things to do', there was Around the World in 60 minutes at the Online Centre, Chinese painting at the Mary Walsh Centre, a Scarecrow Festival, the good old Lantern Walk, Yoga, Taekwondo, bus trips to interesting places, Mothers Day activities, fun for the littlies with Playgroup trips, indoor and outdoor bowls, games days, Lebrina market, Living Artists Week exhibition, football disco and band nights and the School Fair. This was just some of the highlights of the year gone by.

Now we come to the 'for sale' and what a plethora of items adorned the back page, from white drakes, ceiling fans, plants, school uniforms, flues, fridges, mag wheels, bedspreads, laptop computer, jams and berries, bandsaws, motor mowers, bird aviary, urn, more plants, dining furniture, swimming pool, cow manure, sheep manure, more plants, books and our most favourite of all the 'unwanted cow for trade or sale'. (This caused great mirth during the composition of the November issue, many strange ideas were bandied around the Online Centre, things do tend to get a bit silly on Progressive days, especially if things aren't going right). You'll be pleased to know the cow did find a good home.

(Continued on page 2)

Natural Therapist

Qualified Medical Herbalist

6395 2080

- Medicinal Herbs
- Remedial and relaxation massage
- Flower Essences
- Yoga classes
- Relaxation techniques

Libby Schilling
DBMMCATMS

Lilydale-Karoola Veterinary Service

a branch of Scottsdale Vet Service

Main Rd, Lilydale Ph: 6395 1271
ALL HOURS

Ron Harris BVSc



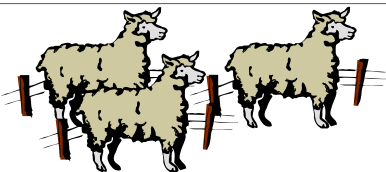
CONSULTING HOURS

Mon-Fri: 9-10 am & 5-6 pm

By appointment

All species attended

Full Surgical, Laboratory, Dental, Radiology,
Clipping & Grooming Services available,
Johnes Disease Accreditation, Mastitis,
nutrition & reproductive programmes for cattle



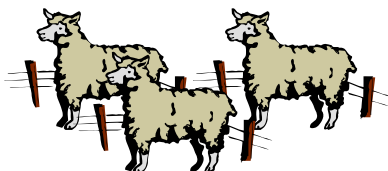
Local Sheep Shearer Available

from one pet to large mobs

Comb & Cutter sharpening
service also available

Ph 6395 4335

Jeremy
Fuller



Of course, the jokes, the little 'fillers' (that sometimes take an age to find) Club announcements and reports.

The big one for 2007 however is
3 TEAMS WINNING THE GRAND FINALS.

So, as this is the last edition for 2007, thank you to all the contributors and advertisers of the Progressive this year. We've said it before and we'll say it again, without your support there would be no Progressive.

Ed: Thanks for that succinct synopsis of the year that was, Carol!

On a personal note I'd like to give a huge thank you to Carol and Coralee for their help with the Progressive this year. The laughter that abounds with each issue makes the job so much easier (particularly when things go pear shaped!). I'm looking forward to recording next years events and I wish you all a fantastic Christmas and Happy New Year. Don't forget to save me some Christmas Pudding!

Lilydale RSL

As you can see by the photo our Bus trip to Hobart was a great success. Everyone enjoyed the trip and already there are some plans for our next excursion!



Our next event is our Annual General Meeting to be held on Friday the 8th Feb 2008, 7.30 pm at the Senior Citizens Club rooms. Our Annual Dinner will be held on Sunday the 10th Feb 2008 at noon at the Lilydale Tavern.

Our December Meeting has been cancelled; therefore the next meeting will be Jan 17th at the usual time.

We wish everyone a Happy Christmas and a prosperous New Year.

Mary Walsh Centre

"Dining With Friends" was held on the 23rd October and also the 20th November. We extend a big thankyou to all the kind people who attended.

Thirty-five Christmas boxes were filled for the Samaritan's Purse. Thankyou to Vanessa and Trish for all

their help collecting and making items and to Helen Chick for kindly delivering them to the collection point in Launceston.

Special thanks to Norma Bardenhagen for the delicious Rhubarb Cake she baked for my birthday. She was kind enough to supply the recipe so we can all make and enjoy this delicious cake.

We were saddened to hear, in late September, that our old friend Margaret Mundy had died. Margaret was a battler and survivor who inspired others by her determination and many achievements in life, not least of which was attaining a licence to drive a motorcycle!

An enjoyable outing was spent in Bridport where we dined at the Barnboughle Golf Links. Later we visited the Tourist Information and Craft Centre, before heading for home.

We farewelled our driver and friend, Roger Taylor, who has driven the bus for us for some four and a half years. We will miss you Roger and hope you keep in touch. Margaret Hanstein, thank you for the donation of craft magazines and your delightful posies of Lily of the Valley. [Margaret is a local (unsung) hero! Every year she picks these lovely, delicately perfumed flowers and brings them to us to provide a little cheer. There are *many* other things I see Margaret doing around the community, including the church garden and her work with CWA. However, she is a person who seeks no praise and you will never hear her talking about her contributions. A *true* giver!]

Trish's family visited the centre; husband Matt, Billie and the grandchildren Claudia and Oliver. We enjoyed meeting them and since the Baby Health Clinic closed in Lilydale we particularly appreciate seeing little children coming into the centre.

Speaking of little ones, we were also pleased to view photographs of Jennifer Story's grandchild, Abby, when Jenny called in for a visit.

Late in October we learned the sad news that Mavis Gibbins had died. Mavis was a dear lady who attended the centre for some years before her illness. She will be sadly missed.

Taking advantage of the gorgeous spring weather we took a picnic lunch to Betty's place where we enjoyed her beautiful garden whilst we ate our delicious food. Somehow one always develops a hearty appetite when eating outdoors. After our lunch clients were happy to sit in the shade of one of Betty's big trees while staff members did a spot of weeding.

Melbourne Cup day found us at Aldersgate for their "Cup Capers" afternoon tea. Having donned our finery we set off, arriving in time to purchase some goodies from the stall before joining friends at the table for

(Continued on page 4)

Weedon Real Estate

66 George St, Launceston

(03) 6331 3566

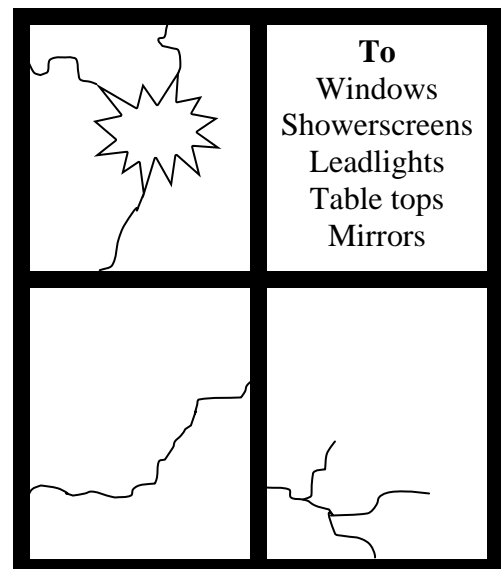
Weedon Real Estate have been selling Lilydale and District properties for well over 20 years and know what the area has to offer to prospective purchasers.

We have a local agent who lives and specialises in the district, so if you are thinking of selling or would just like to know what your property might be worth on to-days market why not call Tom Dancer on 0419 369 162 for a free no obligation appraisal.

Currently we have a number of prospective buyers looking for vacant acreage, so if you are interested in selling why not contact our local agent.

Weedon Real Estate wishes all the readers of the Lilydale Progressive a happy and safe holiday period.

GLASS REPAIRS



Call Trevor on 0418 335 024

For friendly and reliable service.

Geoff McCarthy

**Sand & Slate
Tip Truck Hire
Livestock Transport
Concrete & Road Gravel**

**Phone 6395 4278 Or
Mobile 0408 133 748**

Bardenhagen's Supermarket



ATM

**Pre Paid Mobile,
Home Phone
& Internet Cards,
Aurora Pay-as-you-go
is now available**

Fresh Beaconsfield Bread
Plus all the Specials and Top Produce

Ph: 6395 1422

BACKHOE HIRE 4 x 4 with extender dig



Owner Operator with
25 years experience

FOR A NO OBLIGATION QUOTE PHONE

**TONY PINNER ON MOBILE:
0419 379 368 OR 6395 4248**

games and food.

Jean Paton (my mum) visited the centre to talk about her recent trip to Canada and Alaska. She was able to show us a short DVD of the area as well as photographs and postcards.

As the gardens are currently resplendent and the weather has been so warm, we have conducted further garden visits. Last week we visited my garden in Lilydale, stopped for a barbeque lunch at Lilydale Falls and then on to Lebrina to visit Debbie's garden, before returning to the centre for afternoon tea.

We held our last "Dining With Friends" event for the year on the 20th November. Debbie prepared a delicious dinner, which included roast chicken, ham, and plum pudding, complemented by homemade rhubarb champagne.

I have just completed typing up our requests for our final Way FM programme for this year. As Christmas is just around the corner, some carols have been included. Way FM provide a wonderful service where requests are collected from each day centre and nursing home to form the special Saturday programme, "Just For You".

Dianne, from Nutrimetics, provided Christmas games and displayed some gift ideas on the 22/11/07 and in the afternoon Heather taught us some new Christmas songs.

Our Client Christmas luncheon will be held a little earlier this year, to accommodate some of our group who will be away during our last week, but we will close, as usual, the week



before Christmas, for approximately three weeks.

Wishing you all a peaceful and loving Christmas from all at the Mary Walsh Centre.

Senior Citizens

2007 has been a great year for the seniors. We have 2 new members, and despite being a smallish group, have had a successful year.

We have had 3 very successful bowls carnivals which we have held in the main hall we do hope to hold 3 again in 2008. With rising costs we are very lucky to have such a hard working group of ladies & gents. The club has travelled to Deloraine, Ravenswood & Perth carnivals plus played in 3 Tamar Valley games which are held between George Town, Beaconsfield & Lilydale.

Lilydale is the host club this year for Xmas lunch which will be December 3rd. This year was the first time we

entered 2 teams in the pennant bowls, Lilydale was runner up to ANI which was very rewarding for our first time.

A big thankyou must go out to Carol for keeping us up to date with a news letter on the pennants each week, also to Barbara who picks our teams each time we play it's no easy task.

Our Xmas luncheon will be at Bridport this year & our annual bus trip is to Sheffield. As this year is coming to a close we do hope everybody enjoys their family & friends over Xmas & New Year.

See you all in 2008. Robyn East.

Lilydale Neighbourhood Watch Report

Our B.B.Q. was held prior to this meeting and we had 2 new faces there. It was a bit disappointing due to the absence of locals to support the NHW in our area.

The meeting was held after the BBQ with 13 in attendance. The NHW calendars have not arrived yet but should be out before our next meeting.

The next meeting will not be at the Fire Station due to our Christmas Dinner. We would like to thank David

for supplying his bus for the trip.

Police Report.

1. On 15th Oct a Pajero Station Wagon was stolen from Bacala Road and recovered in Launceston.
2. There was an assault in Austins Road, Turners Marsh. A male was arrested and charged. A shed on a building side on the Main Road, Lilydale was broken into and property was stolen.

This year's Crime Stoppers Youth Challenge competition winners were announced last week. This is a competition in which students from all schools, Public and Private, are able to enter and conduct research, present their findings to the community, and create practical solutions to assist in preventing crime in their own area. We hope our local school will enter this challenge next year. There are 3 sections Upper Primary (Grades 5 & 6); Lower Secondary (Grades 7 & 8) and Upper Secondary.

As we do not close over the summer holiday period, our January meeting will be on the 10th at the Fire Station at 8 p.m.

We are hoping to have a guest speaker at that meeting.



Towns Shearing

Sharon Fahey & Wayne Riethoff

Sharon and Wayne are well known in the Real Estate industry having spent a number of years successfully marketing and selling in both city and country areas.

Working as a team, they are among the most experienced country Real Estate Consultants in the industry with particular expertise with large rural holdings as well as lifestyle hobby farms, acreages, residential homes and subdivisions.

The backing of Launceston's No 1 Real Estate company "Towns Shearing" guarantees the highest level of marketing and success for the many people who entrust the promotion and marketing of their property to them.

If you have a property which may suit their many registered buyers or would simply like an update of the value, give them a call.

And don't forget to ask about our No Cost Advertising Campaign which means that you can choose to pay nothing for marketing whether we sell your property or not.

Towns Shearing Real Estate, 58 Elizabeth Street, L'ton



Sharon Fahey
0409 188 249



Wayne Riethoff
0418 504 742

townsshearing.com.au

...that's *why* more and more people are choosing Towns Shearing



Health Notes

from the Lilydale Pharmacy

Irritable Bowel Syndrome (IBS)

This is a very common gastro-intestinal disorder resulting in abdominal pain and changes in bowel habits. The cause is unknown but it seems to be related to a sensitive, easily upset digestive system.

Symptoms vary widely from person to person but include;

- Abdominal pain or cramp, often relieved by passing wind.
- Diarrhoea or constipation, or one then the other.
- Feeling full or bloated.
- Excess wind
- Heartburn or indigestion
- Nausea or loss of appetite.

Most people have mild symptoms that come and go, but sometimes they can be so severe as to interfere with daily activities. Although IBS is distressing, it does not cause damage or lead to other bowel diseases.

There are a variety of triggers that can aggravate IBS. These include:

- Stress, including strong emotions like anxiety, anger or fear;
- Eating can make the symptoms worse, or just some

types of food (alcohol, caffeine, sweeteners, fatty food, dairy)

- Gut infections – although there is no evidence that candida (thrush) makes IBS worse.
- Some medicines. Eg codeine and iron makes constipation worse.

The symptoms of IBS can also be symptoms of other bowel diseases – so if you think you have IBS you should consult your doctor, and go through all the tests for the other bowel diseases. When the other diseases have been excluded, then you have IBS – but at least it's not going to harm you.

There is no cure for IBS, so it's about managing your symptoms and learning how to live with it.

- Try to identify all your triggers by keeping records of your symptoms and what you do, eat, drink, emotions and medicines.
- Reduce caffeine (tea, coffee, cola),
- reduce alcohol,
- reduce foods high in fat, sugar or salt.
- Try slowly increasing the amount of fibre in your diet, as this often helps constipation.
- Drink more water (up to 8 glasses a day)
- Don't smoke
- Learn and practice relaxation techniques to manage stress – eg yoga, tai-chi

Lilydale Pharmacy

Your family pharmacy for 26 years.



Sugar-free chocolate, sweets and lollipops.

Swiss premium low carb, low GI chocolate

Sugar free licorice, fruit chews, jellies and hard candy.



Accu-chek blood glucose monitors

3 styles from \$59 with a free cookbook ('Cooking the GI way' - value \$29)

Automatic blood pressure monitors.

\$99 with a first aid kit

Pharmacy Choice sunscreen 1 litre

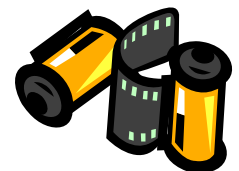
pump pack \$19.90



Helen and Colin Denney

Open Mon–Fri 9 am–5 pm

Phone: 6395 1336



Have a Merry Christmas and a safe and Happy New Year

- Exercise moderately – about 30 minutes a day.

Some medicines can be helpful. Anti-spasm medicines can reduce intestinal activity, cramp and diarrhoea. E.g. peppermint oil, Buscopan and Donnatab.

Anti-diarrhoea medicines like Lomotil, Imodium and Gastro-stop.

Probiotics like Inner Health sometimes help diarrhoea. Regular fibre supplements and occasional laxatives can help with constipation.

History Item

Lilydale (Origin of Name)

Speaking at the monthly meeting of the Lilydale council, the clerk stated that during the month he had been asked by scholars at the Lilydale area school the reason why the district was given the name Lilydale, the date the name was altered and who suggested the alteration.

Lilydale was formerly known as Upper Piper and the council clerk said he could not supply the information so he wrote to Mr LW Loewe of Launceston who is an authority on the early history of Lilydale. In his letter Mr Loewe said the change of name was made in 1887 and the Tankerville Road Trust as the only public body in the district at that time was probably responsible. Mr E Kowarzcic was chairman of the road trust.

Mr Loewe further stated the district was always famous for flowers and at anniversary services there was always a fine display of Christmas lilies in the churches so Mr E Kowarzcic made the remark that the town should be called Lilydale. This was opposed by Mr John Somerville, Jacob Marx and LW Loewe who favoured "Tankerville" which is an old English name.

REX LETHBORG & SON FUNERAL SERVICES



Michael Lethborg
Director



*Prearranged &
Prepaid Funerals
Monumental Work
Professional & Caring Service
Serving All Areas & Denominations*

Scottsdale • 6352 2659
Tamar Valley • 6382 4124

Fax: 6352 4050 24 Hours • Seven Day Service

Retirement Sale !!

**I have decided to retire, kick back
and smell the roses.**

**Therefore, The Lollydale Shoppe & Whispering
Wisdom Gift Store will be closing down.**

**From Thursday 6th December thru to close of
business on Sunday 9th December, all stock in
both shops will be reduced between 25-50%.
A great opportunity to shop for Christmas and
other occasion gift bargains.**

**I thank all my customers for past patronage,
and wish you all a very merry Christmas and a
most wonderful New Year.**

Carolyne

nobody does it better

L.J. HOOKER



Debbie Sarich
0408 265 919

Australia's best known and most **trusted** real estate company.

For a no fuss down to earth approach why not give me, your **LOCAL** full time agent, a call.

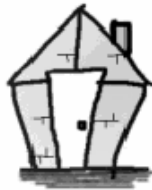
I have lived at Turners Marsh for almost 20 years and actively work the area, After an extremely busy few months I am very keen to acquire new properties to sell.

Would you like the successful team of Debbie Sarich and L.J Hooker working for you?

L.J. Hooker Launceston
Level 2, 97a York Street
Tel: 03 6334 9111
Fax: 03 6334 9199
Email: Launceston@ljh.com.au



Wilkin Design



For all concept, designs,
drafting and organisational
duties in the Building Industry

Todd Wilkin
P.O. Box 96
Lilydale, 7268

Phone: 6334 5800
todd@wilkindesign.com.au

BORBAS TV and ANTENNA SERVICE



Digital antenna
Set ups for digital set top
boxes
Satellite dishes
New connections

Laszlo(Les) & Eva Borbas
Phone: 6395 2048
0419 927 292

One objection made was that there was a Lilydale in Victoria and letters are miscarried. Although it is 67 years since the name was changed letters are frequently sent to the wrong town.

From Minutes of Lilydale Council meeting North Eastern Advertiser 10-11-1944

Ed: As a side note some letters STILL end up in Lilydale, Victoria even with postcodes, so much for progress ;-)

District Swimming Pool

Lilydale District Swimming Pool open for season 2007/8.

Price of entry same as last year.

Daily Admission \$1.80

Spectator \$0.80

Multi Swim 25 \$39.00

Multi Swim 50 \$67.50

Pool Open: School days 3 – 6 p.m.
School Holidays)
Saturday and Sunday) 2 – 6 p.m.
Public Holidays)

Closed: Christmas Day
Children 10 years and under must be accompanied by an adult or guardian 16 years or older and their activities supervised.

Remember to protect yourself from the sun.
SLIP, SLOP, SLAP.



Lions Club News

Our annual Senior Citizens Bus trip was held on Sunday 25th November to Latrobe to visit the House of Anvers and other attractions in the area followed by afternoon tea.

Our Christmas raffle will be drawn on Saturday 22nd

Elders

No 1 in Australian Rural Real Estate

180 Cimitiere Street, Launceston

Quin Partis 0407 879 889

Quin is actively seeking new properties, large or small, cleared or bush, on small allotments or larger productive farms to match our ever increasing demand from mainland buyers for our Enviaible lifestyle.

Please phone Quin if you have plans to sell in the near future.



December with first prize being a \$100 open order from Bardenhagen's Supermarket. There are six prizes in total - please buy a few tickets if you see us selling locally.

The State Lions Conference was held at the Tail Race Centre in early November. Guest speakers included the International President and Father Chris Reilly from New South Wales. Both were very inspiring speakers.

Santa Claus and members of the Lilydale Fire Brigade will be helping us with our cake drive on 7 December from 6 p.m. onwards. For cake orders ring Colin 6395 2065, for pulverized cow manure ring Stephen 63 95 1323.

Lilydale District Pony Club

The pony club Christmas BBQ will be at the Lilydale Pool on Friday December 21st from 6 to 8 pm.



Our Summer camp will be at the West Tamar pony club grounds (Gravelly Beach) from January 9 to 11 (Wed to Fri). We will be having a shared camp with Launceston Pony Club. With about 15 to 20 of their riders, and a similar number of our own, we should have a good time.

If you want to find out more about the pony club, phone Janice 6395 450 or Jo 6395 191.

Lilydale Football Club

Annual Meeting

Our annual meeting in October was attended by 21 members. We say goodbye to President Ian Chugg, Bar Manager Mandy Hammersley and Canteen Managers Jill Hawes and Roxy Betts also committee members Don Pollard and Phillip Chick.

We thank them for their work and commitment to our football club, the sad side of these people leaving is that 3 are life members with plenty of experience around our club. David Walsh is back as President, Greg Nutting Vice President, Alice Hawes Bar Manager, Carol Avent, Canteen Manager, Maree Arnold and Senior ruckman Ben Arnold join the new committee.

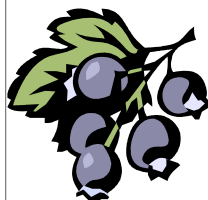
Wanted

Casual Workers
for picking and packing blueberries
at Turners Marsh

Commencing late January 2008

For more information call
Bilambil Berry Farm

6326 4351



Lilydale Post Office & Gorgeous Gifts

1975 Main Road, Lilydale, Tasmania 7268
Props. Tom & Chris Dancer • Phone/Fax-(03) 6395 1177



Well I certainly do not know where the last year has gone, but it has certainly flown.

As per usual, the Lilydale Post Office and Gorgeous Gifts will be open on Saturdays from 9.30 am - 12.30pm in December commencing on the 1st of December right up to Christmas day in addition to Monday to Friday trading.

There will be no inward or outward mail deliveries on these Saturdays, however all other postal services will be available. This includes banking, paying of accounts, packing as well as collecting of existing parcels, picking up laybys, purchasing Christmas cards and stamps and also that last minute shopping for gifts to fill those Christmas stockings.

Call in on any one of the December Saturdays and join us with a piece of Christmas cake.

From all the staff at the Lilydale Post Office and Gorgeous Gifts, we wish you a very happy Christmas and a safe New Year.



Classifieds

FOR SALE

Advertise your unwanted items here for only \$1

For Sale \$300 (lot)

Three wheel pram – Valco (Incl Rain cover) - black
Baby change table - Bath inside, 2 racks for storage

Baby Bath plastic

Wooden cot (Very good condition) including – Matching, cot sheets, woollen under blanket, doonah, pillow, blanket, cot toys

Security Gate

Potty

Box of clothes (boys ranging 2-4)

Soft toys

High Chair

Please contact Debi or Brett on 63947171 (will deliver to you)

Potted Plants:

Carnations, Sims, French, Dianthus, Fusetia, Armeria, Mini Day Lilies, Felicia ect.

Numerous ground covers:

Cranes Bill, Arenaria, Iberis, Verbena, Snow in Summer etc.

Available December and January.

From \$2.50

Phone: 63 95 4119

Roller Door (Brown) 2 metres high x 2.5 wide with tracks \$45.00 **Phone: 63 95 1264**

1 Large Dog Kennel \$80.00

1 Flat tray 8' x 6' reasonable condition \$100

1 set of grass harrows 8' wide with 3 point lifting frame \$550

Phone: 63 95 1279

Wanted

**Mature Age Jack of all Trades/
Gardener needed.**

Ability with small
motors
an advantage

Ph: 6326 9313



We are looking for a new Secretary to replace Lisa Storay who is due to have a baby in January.

The committee is down on numbers for next season, so any parents or players willing to join can contact the President or any of the committee.

Coaches 2008

Neville Rattray has been reappointed for 2008, assistant coach Jeff Dunne is away on holiday and will give us an answer in December.

Reserves Premiership Coach Bruce Lockhart has been reappointed for a third term along with 3 time under 16's premiership coach Barry Hawes takes over as assistant to Bruce.

Trevor Avent takes over the under 16's coaching position after being assistant to Barry last year.

Rodney Lockett takes over the under 13's for 2008 season.

We are still seeking help for Don Pollard with the under 10's.

Training starts on Thursday 29th November at 6.00 p.m. and every Thursday up to Christmas.

Monster Auction

After last years huge success it's on again on Saturday 23rd February 2008. So anyone with items they wish to donate to the auction can contact auction committee members for pick up.

We have a lock up shed to hold items early this year, contact numbers are David Walsh 04180128877, Alan Rosier 6395 1043, Greg Nutting 0407 951002 or Barry Hawes 04270 349215.

I would also like to take this opportunity to thank the Lilydale Community for their support in 2007 and wish everyone a Merry Christmas and Happy New Year.

Scarecrows in the Vineyard

Providence Vineyard

10 March 2008

Expressions of interest are invited from local businesses (catering, service, arts and crafts etc) to operate a stall at the festival. For a prospectus please contact Brenda on 6395 1290

Fax 6395 2088 or email Brenda@providence.com.au

Enter the Pearly Gates

Three men find themselves at the Pearly gates on Christmas Eve waiting to enter Heaven. On entering they must present something relating or associated with Christmas.

The first man searches his pocket, and finds some



Mistletoe, so he is allowed in.

The second man presents a cracker, so he is also allowed in.

The third man pulls out a pair of stockings.

Confused at this last gesture, St. Peter asks, "How do these

represent Christmas?"

Answer... "They're Carol's."

Lilydale Online Access Centre

Well another year is almost over. We've had some terrific E-Learners in this year, and I'd like to congratulate all those who completed the course. Anybody interested in enrolling for E-Learn next year please contact the Centre and give us your details. We'll put you on our waiting list. We have been able to place 4 E-learners in each round this year, and hope to do so again next year.

Thanks to all our patrons for another successful year at the Centre, I hope you've learned heaps and look forward to helping you again in the New Year.

Also many thanks to our cheerful band of Volunteers,

Coralee Freeman, Jenny Scarborough, Colin Denney and Scott Livingston in particular for all their hard work through the year.

As in previous years the Centre will be closed for 2 weeks over the Christmas period. We will be closed from 6 pm on Friday 21st December 2007 and will re-open at 2 pm on Tuesday 8th January 2008.

Here's wishing you all a very merry Christmas and a safe and happy New Year from all at the Lilydale Online Access Centre.

Looking forward to seeing you all in the New Year, and what a year it will be, when we move to our new premises. More news about this exciting change next year, stay tuned!

Centre Opening Times:

Closed from 22nd-12-2007

Reopens at 2pm 8-1-2008

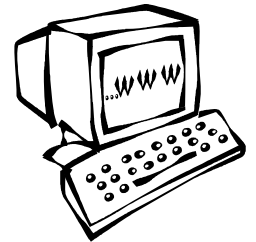
Tuesday: 2-6pm

Wednesday: 9am-1pm

Thursday: 2-6pm

Friday: 2-6pm

Saturday: 10am-12noon



Ph/Fax: 6395 1129

to book your one hour session.

LILYDALE HAIR



NOW OPEN
MON-SAT

CALL LETITIA FOR BOOKINGS
63 95 13 65

UPHOLSTERER
 Stephen Griffin
 6395 1323
 Mobile: 0419 951 323
 Brown Mountain Rd
 Underwood
 For all types of furniture upholstery. Extensive range of fabrics and vinyls available.
 Free Quotes—No Obligation

Lilydale Antiques and Old Wares

Buying and selling fine antique furniture, collectibles and memorabilia, paintings and prints, jewellery and unusual old (and not so old) wares.

Come in, browse and reminisce - it's surprising what you might find - all welcome.

Open Friday to Monday - 10 am to 5 pm
 1976 Main Rd, Lilydale - opp the PO
 Contact Ian or Jillian on 6395 1007, or
 lilydaleantiques@aapt.net.au

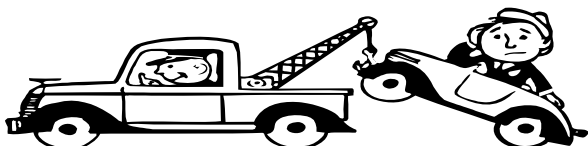
WILLIAMS BODYWORKS

DOES YOUR CAR NEED

- = Panel Beating =
- = Spray Painting =
- = Chassis Work =
- = Car Detailing =

*Insurance or private repairs. See Col for a free quote.
 With over 20 years experience in smash repairs
 your car will look like new!*

Cnr Whites Mill and Lilydale Roads
 Phone 6395 1391



A Celebration of Christmas for the Community

Regional Arts and the District School are combining to organise a celebration of Christmas to be held at the School on Friday 14th December.

The event will start from 6.00 pm at the Shady Cafe with a free Sausage Sizzle, coffee, tea, or squash and Christmas fare available to purchase.

Safe, reusable, electric candles will be on sale at \$2 each. Please bring \$2 coins as change could be a problem.

These candles are for use during the singing in the Gym where wax candles may not be used. Save those for the next Lantern Walk!

Also please note that food and drinks may not be taken into the Gym.

Community singing, led by members of the school choir and the Valley Voices, with special emphasis on Christmas songs which the kids will enjoy, will start in the Gym at 7.00 pm and last for approximately one hour.

Come and join in and get the Christmas Season off with some rousing singing!

Optimist vs. Pessimist

A family had twin boys whose only resemblance to each other was their looks. If one felt it was too hot, the other thought it was too cold. If one said the TV was too loud, the other claimed the volume needed to be turned up. Opposite in every way, one was an eternal optimist, the other a doom and gloom pessimist.

Just to see what would happen, on Christmas Eve their father loaded the pessimist's room with every imaginable toy and game. The optimist's room he loaded with horse manure.

That night the father passed by the pessimist's room and found him sitting amid his new gifts crying bitterly.

"Why are you crying?" the father asked.

"Because my friends will be jealous, I'll have to read all these instructions before I can do anything with this stuff, I'll constantly need batteries, and my toys will eventually get broken." answered the pessimist twin.

Passing the optimist twin's room, the father found him dancing for joy in the pile of manure. "What are you so happy about?" he asked.

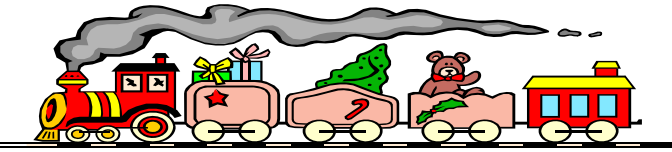
To which his optimist twin replied, "There's got to be a pony in here somewhere!"



A Parent's Night before Christmas

'Twas the night before Christmas when all through the house

I searched for the tools to hand to my spouse.
Instructions were studied and we were inspired,
In hopes we could manage "Some Assembly Required."
The children were quiet (not asleep) in their beds,
While Dad and I faced the evening with dread:
A kitchen, two bikes, Barbie's town house to boot!
And, thanks to Grandpa, a train with a toot!



We opened the boxes, my heart skipped a beat....
Let no parts be missing or parts incomplete!
Too late for last-minute returns or replacement;
If we can't get it right, it goes in the basement!

When what to my worrying eyes should appear,
But 50 sheets of directions, concise, but not clear,
With each part numbered and every slot named,
So if we failed, only we could be blamed.

More rapid than eagles the parts then fell out,
All over the carpet they were scattered about.
"Now bolt it! Now twist it! Attach it right there!
Slide on the seats, and staple the stair!
Hammer the shelves, and nail to the stand."
"Honey," said hubby, "you just glued my hand."

And then in a twinkling, I knew for a fact
That all the toy dealers had indeed made a pact
To keep parents busy all Christmas Eve night
With "assembly required" till morning's first light.

We spoke not a word, but kept bent at our work,
Till our eyes, they went bleary; our fingers all hurt.
The coffee went cold and the night, it wore thin
Before we attached the last rod and last pin.

Then laying the tools away in the chest,
We fell into bed for a well-deserved rest.
But I said to my husband just before I passed out,
"This will be the best Christmas, without any doubt.

Tomorrow we'll cheer, let the holiday ring,
And not have to run to the store for a thing!
We did it! We did it! The toys are all set
For the perfect, most perfect, Christmas, I bet!"

Then off to dreamland and sweet repose I gratefully went,
Though I suppose there's something to say for those self-deluded...
I'd forgotten that batteries are never included!



Need Help with your weeds? Quikspray Unit on Trailer

Available For Hire

Lilydale Landcare will again offer its special unit for hire at exceptionally low rates:

\$25 per day (\$40 per week-end) including 200 litres of spray. (Additional chemical can be purchased.)

The unit is easy to use with 100 metres of hose – remote radio retractable – mounted on a trailer. With a little help from you, it is DEATH TO WEEDS.

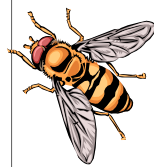
This service is made possible by the valued sponsorship of:

**Neil Buckby Motors
Elders Ltd and Seasol** – together with
Tamar Natural Resource Management – your NRM group.

Please congratulate them and reward them.

Advance bookings for Spring and Summer are now open. **Prize awarded to the first 5 bookings.**

Phone Chris Strong 6395 1350 or
Greg Duke 0407 882 595



North East Pest Management

Phone 6352 7329

Mobile: 0429 163 705

All work fully Guaranteed



Ants
Bees
Carpetbeetles
Cockroaches
Fleas
Millipedes



Possums
Rodents
Scorpions
Silverfish
Slaters
Spiders
Wasps

Locally Owned and operated
For your free quotes
Call Malcolm or
Sharon Bowden



Community Noticeboard

The Combined Church's Christmas Carols

to be held at St. Anne's Catholic Church.
Lalla Road Lilydale

Sunday 16th December at 7.30 p.m.

Featuring traditional
Carol singing and
the Valley Voices

Supper to follow

All Welcome



Interested in local history?

The Lilydale History Group meets from 7.30 pm on the 3rd Friday of May and August, and from 8pm in November and February, at the Old Courthouse, Lilydale. In months in which we don't meet we have informal group days or evenings where members of the public are most welcome to attend and discuss local history. Non-members are welcome to attend to discuss any aspects of the history of the district.

For further information: Write to:
The Secretary, Lilydale History Group,
PO Box 3, Lilydale, 7268

Telephone: Helen on 6395 2060 or
Tammy on 6395 6278

Email: lilydale_history_g@tasmail.com

Website at: www.lilydaletas.net/history



Lilydale-Karoola Catholic Church Christmas Celebrations

St. Annes's Church, Lilydale

Wednesday 19th December
7 p.m. Confession
Monday 24th December Carols
at 6.30 p.m prior to
Mass at 7 p.m.



Lilydale Online Access Centre

Opening Hours:

Tuesday: 2-6pm
Wednesday 9am-1pm
Thursday 2-6pm
Friday 2-6pm
Saturday 10am-12 noon

Contact the Centre on 6395 1129

E-mail: lilydale@tco.asn.au or visit our websites

www.lilydale.tco.asn.au • www.hart.org.au
www.lilydaletas.net



Community Christmas Carols Lilydale District School Gymnasium 6pm Friday 14th December 2007



Valley Voices
Lilydale School Choir
Free Sausage Sizzle

Refreshments & Christmas Fare available
Battery operated candles \$2

No food, drink or wax candles in the Gym please

Brought to you by Lilydale branch TRA & Lilydale District School

YOUR LIBRARY

LILYDALE COMMUNITY LIBRARY
MAIN ROAD, LILYDALE

Phone 6395 1110

WE ARE OPEN

Tuesday 3.00 – 7.00
Friday 2.00 – 7.00
Saturday 10.00 – 12.00

Plenty to see and do

Books, magazines, videos, CD's, DVD's, CD Rom's,
junior reference materials, request an item,
free access to the internet.

Search the State Library's catalogue on our website
at www.statelibrary.tas.gov.au
Free parking available

December 2007

Mon	Tue	Wed	Thu	Fri	Sat	Sun
					1 Swimming Pool opens	2 Pony Club Karoola Oval
3	4 Progress Association TOCHC 7.30pm Lilydale Senior	5 CWA Lions 7.30 pm	6	7	8	9
10	11 Retirement Units 7.00 pm	12	13 Neighbourhood Watch 8.00 pm	14 Community Carols 6pm LDS Gym	15	16 Combined Christmas Carols 7.30 pm St Anne's
17	18	19 Lions 7.30 pm Confession 7pm St Anne's	20	21 Pony Club Xmas Party Lilydale Pool 6 pm	22	23
24 Carols 6.30 pm Mass 7pm St Anne's	25	26	27	28	29	30
31						

Every Monday: *Valley Voices: Uniting Church, Main Rd, 7.30 pm* Every 2nd Monday: *Fire Brigade Training: 7-9 pm 6395 1260*
 Every Tuesday: *Day Care: Main Rd 9-3, Senior Citizens: Clubrooms 1.30pm,*
 Every Wednesday: *Karoola Playgroup: Karoola Hall 10 am, Tai-Chi: Uniting Church Hall 9.30 am, Lilydale Playgroup: Anglican Church 10-12*
 Every Thursday: *Day Care: Day Care Centre Main Rd 9-3 • Every Friday: Senior Citizens Bowls: Clubrooms 1.00pm*

Lilydale Emergency Directory:

Fire: 000

Police: 000

Ambulance: 000

Launceston General Hospital: 6348 7111

Poison Information Service: 131126

Doctor: 6395 1455
6395 1258 AH

Pharmacy: 6395 1336

Need a Fire Permit, contact one of these people:

LILYDALE

Brigade Chief - Gavin Storay Ph: 63951360 and 0429022154

2nd Officer - Dave Cleaver Ph: 0407047083

3rd Officer - David Dornauf Ph: 0409868712

Permit Officer - Murray Dolbey Ph: 042784624

AUSTINS ROAD/ROWLEY HILL ROAD

Permit Officer – Bob Smith Ph: 0428 954 194

Permit Officer – Shane Coleman Ph: 0407 263 120

LOWER TURNERS MARSH/BANGOR/KAROOLA

Permit Officer – Jeff Tonkes Ph: 6395 4495 or 0418 368351

LEBRINA

Chief & Permit Officer – Mark Wilson Ph: 6395 6179

Permit Officer – Robert Hawes Ph: 6395 6270

PIPERS BROOK

Chief & Permit Officer – Peter Harley Ph: 63827181

Permit Officer – Ian Sauer Ph: 6382 7179

PIPERS RIVER

Permit Off - Andrew Francombe Ph: 6395 4391 M 0418 133 917

Permit Officer - John Hurst Ph: 6382 7138

TURNERS MARSH/FINGER POST HILL

Chief: Leon King Ph: 6326 4363 0428 435 296

Allison King Ph: 6334 4106 0419 316 964

Bob Smith Ph: 0428 954 194

Lilydale District Progress Association Inc
PO Box 3
Lilydale, TAS 7268

Editing, Layout & Distribution:
Jayne Saddington
Ph: (03) 6395 1598
Fax: (03) 6395 1129
E-mail: lily_progressive@yahoo.com.au

The Lilydale Progressive is published monthly from February to December by the Lilydale District Progress Association Inc. Letters to the Editor (up to 200 words) and other copy may be left at the Lilydale Pharmacy. Articles may also be forwarded on floppy disk in any text format or via e-mail to:

lily_progressive@yahoo.com.au

Advertisers Please Note:

When submitting a new ad please indicate in writing, how many times you want it to be published. Ads received without notification as to times and issues will be repeated, and charged accordingly, until a notice of discontinuation has been received. This is not a threat but a sincere plea to make the editor's life easier. If you are interested in advertising in the next issue of the Lilydale Progressive, please contact the editor to discuss your requirements.

Current Advertising rates:

1/6 page	\$20	per issue
1/3 page	\$30	per issue
1/4 page	\$25	per issue
1/2 page	\$50	per issue
Full Page	\$100	per issue
Classifieds:	\$1	per issue

Individual Panna Cotta

(Ideal for Christmas Lunch)

Ingredients:

1¾ tsp powdered gelatine
375ml single cream
6 level tbsp icing sugar
Half a vanilla pod, split
Piece of lemon rind
80g raspberries



Method:

1. Put 2 tbsp water in a cup and sprinkle the gelatine in it. Set aside for 5 minutes.
2. Place the cream, sugar, vanilla pod and lemon rind in a saucepan over a medium-low heat and simmer for 5 minutes.
3. Add the gelatine mixture and stir for 2 minutes.
4. Remove the vanilla and lemon rind.
5. Pour into 4-6 small glasses or cups and refrigerate for 4 hours or until set.
6. To serve, toss the raspberries in a teaspoon of icing sugar and arrange them on top of the panna cotta.

Makes 4 to 6 individual cups.



BARRETTS



BARRETT'S COACH TOURS & ROSES TRAVEL INVITE
YOU TO JOIN THEM ON THE FOLLOWING DAY TRIPS AND EXTENDED TOURS

15 DAY KANGAROO ISLAND – MURRAY RIVER TOUR

Departs 02 March 2008 Explore beautiful Kangaroo Island followed by 5 day Cruise on Murray River travelling 556 kms from Wellington to Renmark passing through 6 Locks. Absolutely fantastic trip. **(Itinerary Available)**
\$3800.00pp T/s

MARCH LONG WEEKEND 2008 3 DAY TOUR Departing **Saturday 08 March 2008:** Far North West Coast including Arthur River Cruise, Dismal Swamp, Stanley and heaps more. Cost includes: Luxury Coach Travel, accommodation, all meals, cruise & entries. (itinerary available) \$490.00 pp. Twin Share/ \$582.00 Single Supp.

7 DAY NORFOLK ISLAND TOUR: Departing **29th March 2008.** Itinerary available from our office.

26 DAY NORTH QUEENSLAND & OUTBACK TOUR: Departs **11th June 2008:** Includes, Aust Zoo, Whitsunday Islands, Cairns, Cooktown, The Lava Tubes, Karumba, Long Reach, Stockman's Hall of Fame, Rose Hill Averages, Cubbie Station Cotton Farm, Lightning Ridge and lots more. Itinerary Available

ROSES TRAVEL, Licence No TAS043, NOW HAVE AN EXTENSIVE RANGE OF MAPS FOR SALE – TASMANIA AND INTERSTATE as well as camping guides (all States), holidaying with cats & dogs and travel diaries. DON'T FORGET WE CAN DO YOUR TT LINE BOOKINGS (no extra charges). International Travel Consultant available to assist you with all your travel requirements – visas etc. (Secure sites for credit card payment) Travel Insurance & Gift Vouchers also available.

PH 03 6352 2186 FAX 03 6352 2268 Email: barrettscoaches@hotmail.net.au