



THE LILYDALE PROGRESSIVE

Inside this issue:

<i>Lilydale Playgroup</i>	2
<i>Neighbourhood Watch report</i>	
<i>Unemployed?</i>	
<i>Karoola Playgroup</i>	3
<i>The Farmer Wants a Wife</i>	
<i>Lilydale Senior Citizens</i>	4
<i>Mary Walsh Centre News</i>	
<i>Lilydale Lions Club</i>	5
<i>Fact or Fiction?</i>	
<i>Health Notes</i>	6
<i>Ragwort Raid</i>	
<i>Smart Living</i>	7
<i>Balancing Production &</i>	
<i>Environmental Care</i>	
<i>RSL</i>	8
<i>CWA Notes</i>	9
<i>Higher Water Charges</i>	
<i>Clean Up Australia Day</i>	10
<i>Pony Club News</i>	11
<i>Worlds Greatest Shave</i>	
<i>Lilydale Online Access Centre</i>	12
<i>Lilydale School Snippets</i>	13
<i>Community Notice Board</i>	14
<i>Calendar</i>	15
<i>Classifieds</i>	16

Progressive Deadlines

Articles for inclusion can be left at the Lilydale Pharmacy or e-mailed to lily.progressive@gmail.com by the following dates:

2008

March 28th

April 24th

May 23rd

June 27th

July 25th

August 22nd

Editorial

Are You Older Than Dirt?

I got this via email the other day and I thought I'd share it with you as a practical test of whether you, like me, are older than dirt (or very nearly)!

Older Than Dirt Quiz:

How many do you remember?

Count all the ones that you remember not the ones you were told about.

Ratings at the bottom.

1. Choo Choo bar
2. Drive ins
3. Candy cigarettes
4. Soft drink machines that dispensed glass bottles
5. Coffee shops or milk bars with tableside juke boxes
6. Home milk delivery in glass bottles with foil stoppers
7. Party lines
8. Newsreels before the movie
9. EH Holdens
10. Blue flashbulb
11. Telephone numbers with 2 letters and 4 numbers
12. Peashooters
13. Wash tub wringer
14. 78 RPM records
15. Metal ice trays with lever
16. Model T Fords
17. Cracker night
18. Using hand signals for cars without turn signals
19. Bread delivered by horse and cart
20. Head light dimmer switches on the floor
21. Ignition switches on the dashboard
22. Heaters mounted on the inside of the wall
23. Real ice boxes and ice delivered by horse and cart
24. Pant leg clips for bicycles without chain guards

25. Soldering irons you heat on a gas burner

26. Wind up gramophone

27. PLAYING OUT SIDE???????

If you remembered 0-5

You're still young

If you remembered 6-10

You are getting older

If you remembered 11-15

Don't tell your age,

If you remembered 16-25

You're older than dirt!

I might be older than dirt but some of those memories are the best part of my life. If you have special memories about times past please join with us in recording them for others to enjoy. The Memories, Remembrances & Anecdotes project has begun. We hope you've been cleaning out those dark, creepy corners and gathering memorabilia ready for our first morning tea which will be held after Easter.

If you'd like to help or contribute, please contact:

Carol Charlton: 6395 1263

Jayne Saddington: 6395 1598

MEMORIES from a friend (by email)

My Dad is cleaning out my grandmother's house (she died in December) and he brought me an old tomato sauce bottle. In the bottle top was a stopper with a bunch of holes in it. I knew immediately what it was, but my daughter had no idea. She thought they had tried to make it a salt shaker or something. I knew it as the bottle that sat on the end of the ironing board to 'sprinkle' clothes with because we didn't have steam irons. Man, I am old.

See you all next month.

Jayne



Lollydale

Come and see the new look Lolly Shoppe.

Now selling Valhalla ice-creams and sorbets, Cascade drinks & beautiful Anvers truffles & fudges, plus all your favourite chocolates & lollies. New additions arriving almost weekly!

We now have gift boxes and baskets of chocolates, lollies, jams & sauces along with a beautiful range of souvenirs to give to visiting relatives or friends.

So come along and have a look - your taste-buds will love you!

Open Monday to Sunday: 9:30am – 5:30pm,
Tuesdays: 11:30am – 5:30pm



1985 Bridport Road
Bridport 7262
Gaye:
Tel: 6356 1542
Mob: 0438 561 542

Warmth, caring & trust blended with experience is what the team at Gaye's funeral services provide at a vulnerable time.

ó Offering ñ

- Traditional or Unique Funerals, Burials or Cremations
- Public or Private
- Pre-Paid or Pre-Arranged
- Bronze Plaques
- All denominations - Any Area



Jan: 0407 127 119

Lilydale Playgroup

Hi to all the Mums and Dads around Lilydale.

I would like to let you know our Playgroup day this year is Tuesday 10am to 12 pm, you are most welcome.

It is a small Playgroup, with a relaxed atmosphere and great facilities.

We would love your support if you are free and would like some company & fun for yourself and your children.

It's \$3 per family and membership for one year entitles you to many benefits with the Playgroup Association. For example they have a terrific Toy Library with very good quality toys for hire at very low prices.

We meet in Station Road, just behind the little Anglican Church.

Yours Bronwen Hanstein

Lilydale Neighbourhood Watch Report

We had our average attendance of 13 at this meeting and of these 7 have been attending these meeting every month for the past 16 years since we have formed our group. Unfortunately 2 of these will soon be leaving the district so our numbers will be lower each meeting. They have done a marvellous job for our community group since it started and they will be greatly missed by all of our members.

Thank you so much Kevin and Lorna for your dedicated support over the 16 years. We wish you all the best for the future in your new home.

Our guest speaker did not turn up this month so once again the Zone Leaders did not get their photos taken. We will be checking to find out when this will be happening.

We have had a crime free month this month which is very good. There were no suspicious incidents reported either so it has been very quiet crime wise.

BE WARNED - The yellow line painted on the curb outside the village green means no standing so don't park your vehicles there when you do your shopping.

Our next meeting will be on March 13th. at 8 pm at the Lilydale Fire Station.

Unemployed?

Living in the Lilydale District?

The Mt. Arthur Centre requires Work for the Dole participants to help with:

- General maintenance
- Construction of fences

- Painting
- Landscape gardening
- And bushwalking track work

If you are interested, please contact Matthew at the Mt. Arthur Centre on **6395 1201**

Karoola Playgroup:

Playgroup has started again and we hope that 2008 will be another great year.

Our new President Evelyn Archer and Treasurer Michelle Young have settled into their positions and we thank them for joining the committee.

We have the term planned out already with painting, Easter crafts, outdoor fun day and a trip to Stories bookshop planned, this agenda is available for all mums, dads etc.

If you are new to the area or have some free time, our playgroup runs every Wednesday from 10am till 12 noon, bring some food and drink for the children as tea, coffee etc is provided for the adults.

Cost is \$2.50 per family and age is birth to 5 years.

For more information contact:

Evelyn Archer	63954335	President
Michelle Young	63954169	Treasurer
Jackie Hawes	63948075	Secretary

The Farmer Wants a Wife.

CALL FOR FARMERS
LOOKING FOR LOVE!

Following the incredible success of The Farmer Wants a Wife in 2007, the Nine Network and Fremantle Media Australia are now casting farmers for their second series.

We are searching nationally for real farmers aged between 25 and 45, who are looking to meet their one true love. Bachelors must be working farmers, be it grazier, dairy, citrus, oyster, etc.

The Farmer Wants a Wife begins production in April and will air on the Nine Network later in the year.

Interested men should drop an email with an introduction to nicola@mcgregorcasting.com or call McGregor Casting on **(02) 95572844**.



Weedon Real Estate

66 George St, Launceston

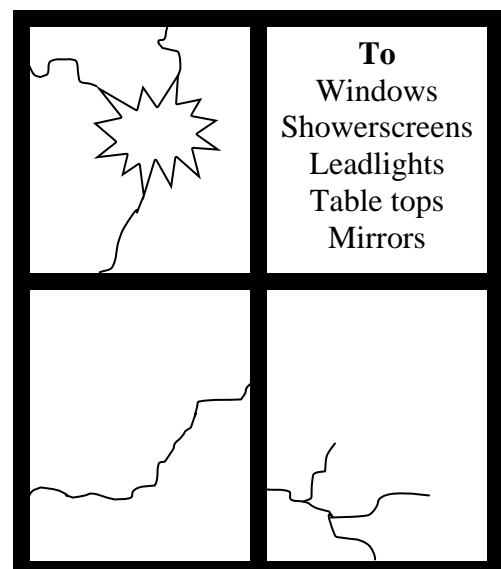
(03) 6331 3566

Weedon Real Estate have been selling Lilydale and District properties for well over 20 years and know what the area has to offer to prospective purchasers.

We have a local agent who lives and specialises in the district, so if you are thinking of selling or would just like to know what your property might be worth on today's market why not call Tom Dancer on 0419 369 162 for a free no obligation appraisal.

Currently we have a number of prospective buyers looking for vacant acreage, so if you are interested in selling, why not contact our local agent.

GLASS REPAIRS



Call Trevor on 0418 335 024

For friendly and reliable service.

Geoff McCarthy

**Accredited Livestock Carrier
Supply & Deliver
Road base Material
Tip Truck Hire & General Cartage**

**Phone 6395 4278 Or
Mobile 0408 133 748**

Bardenhagen's Supermarket



ATM

**Pre Paid Mobile,
Home Phone
& Internet Cards,
Aurora Pay-as-you-go
is now available**

Fresh Beaconsfield Bread
Plus all the Specials and Top Produce

Ph: 6395 1422

BACKHOE HIRE

4 x 4 with extender dig



Owner Operator with
25 years experience

FOR A NO OBLIGATION QUOTE PHONE

**TONY PINNER ON MOBILE:
0419 379 368 OR 6395 4248**

Lilydale Senior Citizens

As this is a short month not much has happened.

Two teams travelled to Perth last week with div.1 losing on a count back for second position.

Our state bowls championships will be held in the sports complex at Deloraine on March 5th. Lilydale has entered 2 teams.

Ravenswood carnival is on the 19th, and Lilydale has entered 3 teams, hoping for a good result. We have also entered 2 teams in the Pennant bowls again this year hoping to do as well as last year, if not better.

We have obtained R. Hawes help and have made seat boxes to put bowl mats and bowls in. It will make it a lot tidier plus more room to sit.

We would like to see new faces in our club-rooms so come along and have a cuppa with us.

The seniors next meeting will be March 11th at 1.30pm in the club-rooms.

See you all next month. R. East.

Mary Walsh Centre News

Although summer continues until the autumnal equinox on the 21st March, we have noticed early signs of the change of season around the garden and can you believe that my grape hyacinths are showing green shoots already!

Our minds were sharpened by several games of "Categories", an old favourite at the centre.

Heather continues to be a welcome visitor at the centre and her musical accompaniment to our singing is very much appreciated.

On the 12th of February, we headed off to Bridport for lunch at the "Flying Teapot". Due to a mix up, we were not able to have lunch there, but travelled on to the "Surf and Turf" for a delicious meal of flathead, chips and salad. After a drive to Old Pier Beach we returned to the "Flying Teapot" to enjoy Wendy's delicious freshly baked muffins, Anzacs and scones with jam and cream accompanied by a welcome cup of tea/coffee.

The CWA donated some material scraps to the centre, which were gratefully received. Trish spent time sorting through the bag of fabrics with the group and allocating pieces for various projects.

We missed Trish on the 14/2/08, when she was sick.

Our volunteer Vanessa, together with husband Martin, recently celebrated the birth of their first grandchild, Sienna. Congratulations to you and of course to the proud mum and dad, Vince and Tamsyn. Vanessa has had the scissors running hot as several clients felt the

need for a trim this month. We really appreciate the convenient service you provide for our group here at the centre. By the way, by the time this goes to print, Vanessa will have commenced her studies at Tafe, in Aged Care.

If you care for a parent living at home or you are an older person who would benefit from friendship, activities and outings, we would love to hear from you at the Mary Walsh Centre.

The centre is HACC funded, managed by a group of dedicated locals and staffed by a friendly team of professionals. We recognise the many benefits, to human health and wellbeing, of providing social support. Self-referrals or referrals by a family member or health professional are accepted.

Our next planned outing, 6th March, will be a Tamar River Cruise followed by a barbeque lunch at King's Park.



Lions Club News

Members enjoyed a barbecue meeting at the Lilydale Falls in January to start the new year. In February we were joined by both the Lions District Governor and our Zone Chairman who came to our dinner meeting to speak to us about the future of Lions in Tasmania and membership.

Lions member, Frea Peschar from Lalla is taking part in the World's Greatest Shave for Leukaemia Research and on Saturday 15th March she will have her tresses trimmed at 2 pm at the Village Green. We have donated \$200 to kick start Frea's campaign - why not come along on the day and support Frea in her efforts.

If you would like to order cow manure please phone 63951323 - we have supplies ready for sale at \$4.50 per bag which is very good value.

If you would like to come along to a Lions meeting contact any member or our Secretary on 63954347.

We have regular theme nights at our dinners (Italian, Mexican, Christmas in Winter and so on) and also guest speakers. It is a great way to meet new people and help the community.

Fact or Fiction?

In the 1400's a law was set forth in England that a man was allowed to beat his wife with a stick no thicker than his thumb. Hence we have "the rule of thumb".



Many years ago in Scotland, a new game was invented. It was ruled "Gentlemen Only...Ladies Forbidden"...and thus the word GOLF entered into the English language.



Towns Shearing

townsshearing.com.au

Sharon Fahey & Wayne Riethoff

Sharon and Wayne are well known in the Real Estate industry having spent a number of years successfully marketing and selling in both city and country areas.

Working as a team, they are among the most experienced country Real Estate Consultants in the industry with particular expertise with large rural holdings as well as lifestyle hobby farms, acreages, residential homes and subdivisions.

The backing of Launceston's No 1 Real Estate company "Towns Shearing" guarantees the highest level of marketing and success for the many people who entrust the promotion and marketing of their property to them.

If you have a property which may suit their many registered buyers or would simply like an update of the value, give them a call.

And don't forget to ask about our No Cost Advertising Campaign which means that you can choose to pay nothing for marketing whether we sell your property or not.

Towns Shearing Real Estate, 58 Elizabeth Street, L'ton



Sharon Fahey
0409 188 249



Wayne Riethoff
0418 504 742

...that's *why* more and more people are choosing Towns Shearing

Your health matters Lilydale Pharmacy

We have
Omron pedometers(\$20) —
this could be your perfect
walking companion to
improve your fitness.



Open Monday to Friday 9am to 5pm
Colin and Helen Denney.
Phone 63951 336

REX LETHBORG & SON FUNERAL SERVICES



Michael Lethborg
Director



*Prearranged &
Prepaid Funerals
Monumental Work
Professional & Caring Service
Serving All Areas & Denominations*





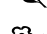
Scottsdale • 6352 2659
Tamar Valley • 6382 4124

Fax: 6352 4050 24 Hours • Seven Day Service

Natural Therapist

Qualified Medical Herbalist

6395 2080

-  Medicinal Herbs
-  Remedial and relaxation massage
-  Flower Essences
-  Yoga classes
-  Relaxation techniques

Libby Schilling
DBMCMATMS

Asthma

In 2005, asthma killed 318 Australians. People aged over 70 accounted for 191 of the deaths recorded, while those aged 40 to 60 years accounted for 95 deaths. Death rates amongst younger groups remained relatively stable, indicating that the asthma management messages are hitting the mark with parents, teachers and carers.

The death rate for asthma has been steadily falling since 1966. This is due to many factors, including new medications and early detection of asthma episodes.

As schools start the New Year, the National Asthma Council of Australia is warning parents, teachers and health professionals to prepare for a corresponding spike in asthma emergencies.

Every year, a few weeks after school goes back, there is a big increase in the number of children with asthma attending hospital emergency departments. Returning to school is strongly associated with increased asthma symptoms, especially following the summer break, a trend that is common around the world. This is attributed to a relaxing of the asthma management regime during the holidays, and an increased exposure to the common cold virus when school resumes. A virus – usually a cold virus, sets off most sudden episodes of asthma in children. 1 in 7 children will have an asthma episode as they grow up, so if your child has an 'Asmol' puffer (the quick fix for coughing or shortness of breath with exercise) remember to pack it in the school bag. Perhaps the preventer puffers need to be started again if you have had a summer rest.

Another health issue that raises its head when school goes back is nits! There is always at least one child who escapes nit detection during the holidays. And it only takes one nit head to pass it back around the class at school.

The Ego product 'Moov' is still very effective at killing the headlice. The problem is that even after a complete cure, it is so easy to catch them back again. Keep a sharp lookout and check your children's hair every week.

Ragwort Raid

On behalf of the whole community Lilydale Landcare Association Inc. wants to thank the members of the Lilydale Fire Brigade and friends who pulled ragwort on roadsides in our region on 2nd February. We are nearly on top of this problem after several years of this effort. We shall continue with our endeavours.

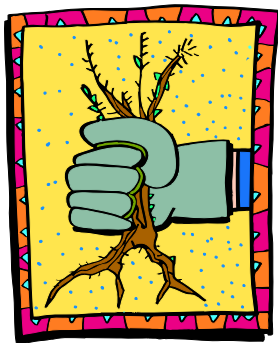
We also want to thank all who have attacked this poisonous weed on their land over recent years, and school students who helped with mapping of problem

properties. Thanks too to LCC and DPIW for their assistance in management of properties that had become infested.

Can we encourage you too to pull any remaining plants you spot?

Please seize this moment to pull this horrible weed before seeds spread [N.B. Up to 600,000 seeds per plant]; place the flower in a secure strong bag and dispose carefully in your garbage bin.

Lilydale Landcare Association - "Committed to a truly sustainable future for us all".



Balancing Production and Environmental Care on our Land

Funding is often available to assist landholders to implement good property management, and government policy, including proper care of remnant "bush" (i.e. stands of old trees) which are known to be a great asset, not just visually but as windbreaks, soil and water protectors, retainers of the complex biodiversity on which our health depends, and more.

If you have old bush or forest you may care to contact Tamar NRM at 63233310 to ask about help to preserve this irreplaceable asset (rather than contribute to climate change by cutting it down).

Achieving Balance, or put differently, "Sensibly integrating production and care of our natural assets" was the theme of a conference held in Launceston last year by Tamar NRM and UTAS Centre for the Environment. "The Seven Tamar Principles" is an easy-to-read short summary of conclusions. On the net there is access to podcasts of some of the speeches. This is a good read for those concerned about Climate Change, Sustainable Land Use and moving on sensibly from the past.

Industry gave its support to the conference. Sponsors included NRM North, ANZ Bank, Becks, Private Forests Tasmania, Origin Energy, CBNN, AT&M integrated marketing, Europcar. DPIW and the federal government contributed. Supporters included TFGA, Greenhams, Delamere Vineyards, Tasmanian Alkaloids, Naturally Nichols and Kyeema Seafoods.

The Tamar Principles are available at no charge from Amanda at Tamar NRM 63233310 or e-mail Amanda.Bruce@launceston.tas.gov.au or at www.tamar-nrm.org.au Select "Conferences".

Smart Living

Tamar NRM (Natural Resource Management) which is backed by Georgetown, West Tamar and Launceston Councils, has a Smart Living Working Group committed to explore ways of achieving a really sustainable future for us individually, our community and our region. It is running a "Save Energy and Water Competition" until March 14th. It is supported by Becks Home Timber and Hardware, Energyman and Launceston Environment Centre.

"It's a part of Earth – the only home we have – let's keep it habitable!"

This is not a "Greens" initiative or exercise. It is non-political. Why not have a go using the Entry Form available at places where the Progressive is stocked? Or via Amanda at 63233310 or e-mail Amanda.Bruce@launceston.gov.au or www.tasmanianenvironmentcentre.org.au



Debbie Sarich
0408 265 919

SELLING?

Why not call your **Local** agent?

I have lived in the district for 20 years and know the benefits of living in this special part of Tassie. My extensive local knowledge is your best asset when negotiating the sale of your home.

BACKED BY AUSTRALIA'S **BEST KNOWN AND MOST TRUSTED** REAL ESTATE COMPANY



Wilkin Design



For all concept, designs,
drafting and organisational
duties in the Building Industry

Todd Wilkin
P.O. Box 96
Lilydale, 7268

Phone: 6334 5800
todd@wilkindesign.com.au

BORBAS TV and ANTENNA SERVICE



Digital antenna
Set ups for digital set top
boxes
Satellite dishes
New connections

Laszlo(Les) & Eva Borbas
Phone: 6395 2048
0419 927 292

RSL News

Our office bearers this year after the A.G.M. held 8/02/08 are:

Patron:	Mr. Tim Denny
President:	Mr. Peter Leonard
Senior Vice President:	Mr. Tom Dixon
Jnr. Vice President:	Mr. Charlie McDonald
Secretary /Public Officer:	Mr. Paul Griffin
Treasurer:	Mrs. Helen Chick

Committee members are L. Godfrey, A. Wilson, A. Olson, B. Jones, and S. Watson.

There is a bus trip on the 30th March (before daylight saving ends) to Wynyard leaving from the Memorial Hall. This trip is available to all members of our community in Lilydale. For a seat please ring Mrs. Sue Watson on 6395 1361.

We are asking for new members either ex service men, firemen, etc and affiliates. Anyone interested can contact Helen on 6395 2060, Paul on 0418 130 838, or Peter on 6395 4243.

The next meeting will be the 20th March at 7.30pm at the Senior Citizens Club Rooms. New members are always welcome. Our Sub Branch is made up of half ex serving members and half are Affiliates. New members can contact Peter on 6395 4243, Paul 0418 130 838, or Helen on 6395 2060.

Anzac Day ceremonies will commence with a Dawn Service at 6am, followed by breakfast, and a warm drink beforehand. Then at 11am a service will be held at the Cenotaph followed by morning tea in the Memorial Hall.



This year Anzac Day falls on a Friday.

Elders

No 1 in Australian Rural Real Estate

180 Cimitiere Street, Launceston

Quin Partis 0407 879 889

Quin is actively seeking new properties, large or small, cleared or bush, on small allotments or larger productive farms to match our ever increasing demand from mainland buyers for our Enviably lifestyle.

Please phone Quin if you have plans to sell in the near future.



C.W.A. Notes

CWA have started the year by making plans for fund raising activities during the year, and have decided to hold a market at the Lilydale Memorial Hall in June. Expressions of interest for having a stall at our market are welcome. The annual CWA Exhibition will be held at the Punchbowl Christian Centre from July 30th to August 2nd.

We are always pleased to welcome new members to our branch, which meets on the 1st Wednesday of each month at the Old Courthouse 1.30 p.m.

Roll call for March will be something for the Baby Box.

Contact phone numbers are:

Mrs. Dorothy Story 63 95 6142

Mrs. Margaret Hanstein 63 95 1267

Higher water charges to encourage responsible consumption

Residents may receive slightly higher water bills in the coming months due to an increase in rates to encourage responsible water consumption.

Council put up its water consumption charge at the start of this financial year, however residents will only now start receiving notices with the higher rate applied.

The charge has increased from 55 cents per 1000 litres to 70 cents. This is likely to result in an increase for the average residential user of approximately 65 cents a week.

The model Council currently uses to determine water charges enables users to better monitor and manage



Quality
Bead
Jewellery
Hand
Crafted in
Tasmania

Now available at Lilydale Pharmacy

Necklaces, Bracelets, Earrings, Jewellery Sets,
Mobile Phone/Zip Charms, Bookmarks

All items also made to order, please contact:

Jayne Saddington: 6395 1598

Coralee Freeman: 6395 4270

www.jaycor.lilydaletas.net

info@jaycor.lilydaletas.net



Plastering & Painting

Travel anywhere
all country jobs welcome

Contact
Steve McLeod

6395 1330
0423 260 987



Lilydale Post Office & Gorgeous Gifts

1975 Main Road, Lilydale, Tasmania 7268
Props. Tom & Chris Dancer • Phone/Fax-(03) 6395 1177

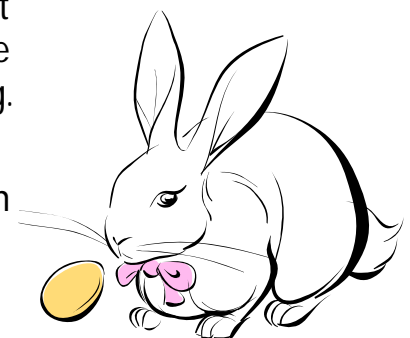


Easter is certainly early this year. Hot cross buns have been in the supermarkets since early January, which certainly is making this year seem like it is flying past quicker than ever.

Lilydale Post Office and Gorgeous Gifts have cute Easter gift ideas, ranging from inexpensive egg cups with a chocolate Easter egg to pelican flower pots containing a larger Easter egg. Easter cards are also "cheep, cheep, cheep" at only \$1.00 each.

Why not call into the Lilydale Post Office to purchase an unusual Easter gift for your loved one this Easter.

See you there!!!!





ABN 81 500 629 636

Stewart Brown
Ph: 0428 689 043

**Council Approved 7000ltr
Stainless Steel Tank
with food grade equipment**

**Deliveries of treated water supplied from
Scottsdale, Bridport or Launceston**

**500 litre plastic tanks available for hire &
refilled on request**

Tank cleaning services also available

H₂O Elixir of Life

PO Box 238 Scottsdale 7260

their water bills, as opposed to a model solely based on a resident's property value.

Despite the increase, Council's consumption charges continue to be lower than many other Tasmanian and interstate councils.

Launceston Mayor Albert van Zetten said, "Launceston currently does not experience water shortages like many other regions, however we all have a responsibility to be mindful of our water consumption to ensure a sustainable future."

This measure is just one way Council is encouraging residents to save water. Other initiatives include the production of an information sheet on 25 ways for households to save water. The flyer is available at Council's Customer Service Centre or online at www.launceston.tas.gov.au

Join us for Clean Up Australia Day

Launceston City Council is calling for volunteers to take part in Clean Up Australia Day on Sunday 2 March.

Council officers are coordinating a clean up at two sites in Launceston - Ravenswood Skate Park and Waverley Lake - between 10.00 am and 2.00 pm. A free sausage sizzle will also be held for participants at Waverley Lake.

Clean Up Australia is this year focusing on reducing the amount of plastic bottle rubbish in a bid to address climate change.

"If people used a refillable bottle instead of buying a new one every time they wanted a drink of water, we would help to reduce the huge amount of greenhouse gases created in making and transporting them," Clean Up Australia Chairman Ian Kiernan AO said.

Launceston City Council Mayor Albert van Zetten said, "We live in a beautiful city and it is important for residents to play a part in keeping it looking great.

"I hope this event will motivate people to be mindful everyday of putting their rubbish, including cigarettes, in the bin and not on the ground," he said.

Residents willing to take part in Clean Up Australia Day can register at www.cleanup.org.au or turn up to one of Council's two sites on the day with gloves, a hat, sturdy shoes, sunglasses and sunscreen and register as a volunteer.

Council will also be holding a free open day at the Remount Road Refuse Disposal Area on March 2 for people wanting to clean up their own backyards. Rubbish can be taken to the tip free of charge between 8.00 am and 5.00 pm.

Lilydale-Karoola Veterinary Service

a branch of Scottsdale Vet Service

Main Rd, Lilydale Ph: 6395 1271
ALL HOURS

Ron Harris BVSc



CONSULTING HOURS

Mon-Fri: 9-10 am & 5-6 pm
By appointment

All species attended

**Full Surgical, Laboratory, Dental, Radiology,
Clipping & Grooming Services available,
Johnes Disease Accreditation, Mastitis,
nutrition & reproductive programmes for cattle**

Lilydale Antiques and Old Wares

Buying and selling fine antique furniture, collectibles and memorabilia, paintings and prints, jewellery and unusual old (and not so old) wares.

Come in, browse and reminisce - it's surprising what you might find - all welcome.

Open Friday to Monday - 10 am to 5 pm
1976 Main Rd, Lilydale - opp the PO
Contact Ian or Jillian on 6395 1007, or
lilydaleantiques@aapt.net.au

Pony Club News

Our pony club is hosting the inter-schools one day event again this year, on April 6th. Each rider rides a dressage test, a cross country course and a show jumping course.

Schools from around the northern region send riders - with events for primary school riders and up to grade 11/12 riders.

We hold this event at 'Fairlands' in Newnham, which is where our cross country course is.

Our April rally will be re-scheduled to another time.

We welcome all our new pony club members and still invite more to come and join us.

World's Greatest Shave

Hi, my name is Frea Peschar. I am a 73 year old mother of seven and grandmother of eighteen. I am also a long term resident of Lalla. I have decided to have my waist length hair clipped to help raise money for the Leukaemia Foundation's "World's Greatest Shave".

The event will take place on the Lilydale Village Green on March 15 at 2.00 p. m

Pledge sheets and donation boxes will be in most of the

local shops and any contribution will be greatly appreciated.

To sponsor me online by credit card, please log on to - www.worldsgreatestshave.com whilst there, you may want to have a look at my webpage. To do that click on 'Gallery', from there click on the P in the alpha list. From this page you can read my poem, leave a comment or sponsor me.

There is a minimum amount of \$5.00 for credit card donations.



LILYDALE HAIR



MEN, WOMEN, CHILDREN ALL WELCOME

Cutting, Colouring, Perming

Open Mon-Fri 9-6pm

Thur 12-7pm

Sat by Appointment 9-12pm

(May close early if not busy)

Fudge Crazy Colours now in store

Pink, Blue, Red, Purple

Professional Head lice Gel/Spray

BEAUTIFUL NECKLACES AND BRACELETS ALL \$20 AND UNDER

Specialising in all your hair care needs call for an appointment

63 95 13 65

Need Help with your weeds? Quikspray Unit on Trailer

Available For Hire

Lilydale Landcare will again offer its special unit for hire at exceptionally low rates:

\$25 per day (\$40 per week-end) including 200 litres of spray. (Additional chemical can be purchased.)

The unit is easy to use with 100 metres of hose – remote radio retractable – mounted on a trailer. With a little help from you, it is DEATH TO WEEDS.

This service is made possible by the valued sponsorship of:

Neil Buckby Motors

Elders Ltd and Seasol – together with **Tamar Natural Resource Management** – your NRM group.

Please congratulate them and reward them.

Advance bookings for Spring and Summer are now open. **Prize awarded to the first 5 bookings.**

Phone Chris Strong 6395 1350 or
Greg Duke 0407 882 595



Lilydale Online Access Centre

The children are back in school and things are hotting up at the Access Centre.

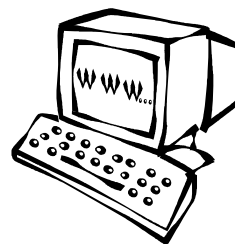
We have 3 new ELearn students this term, all eager to come to grips with their computers and learn some new skills. ELearn is the perfect FREE course for anyone who already knows how to turn on a computer and use their mouse but would like to learn a bit more about Word Processing using Microsoft Word, spreadsheet basics using Microsoft Excel and how to make the most of Internet Explorer for searching information on the Web. Using a combination of a website, manual and online teacher, the whole course can be done from home (if you have a pc with internet connection and Windows XP and Microsoft Office 2003) or can be done here at the Centre. There is no cost for using the Centre to complete the course. If you are looking for work or thinking of returning to work or just want to improve you current skills, ELearn is the perfect course for you. Give us a call to register your interest in our next round of ELearn, places are very limited so get in early to be on our waiting list.

For those who have completed Elearn and would like to go further we can now offer full Certificate 2 courses in IT and Business. For more information please contact the Centre.

Planning a trip or just enjoy the thought of being an armchair tourist? With our fast internet connection you can discover a whole new world out there. Sites like Virtual Tourist allow you to plan (or just dream about) going to a vast number of different countries. This forum based site allows you to ask questions of people who have been there or live there, and get recommendations for all those important questions, what should I see? Where should I eat? What are the local customs? Team Virutal Tourist with Google Earth and you have the perfect partnership of questions answered as well as getting a look at what the place actually looks like (at least from the air). I've found these two resources invaluable in planning my own upcoming trip (but more about that later.)

Centre Opening Times:

Tuesday: 2-6 pm
Wednesday: 9 am-1pm
Thursday: 2-6 pm
Friday: 2-6 pm
Saturday: 10 am-12 noon



Ph/Fax: 6395 1129

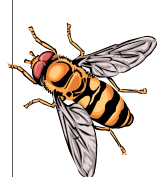
To book your one hour session

Web: www.lilydale.tco.asn.au

E-mail: lilydale@tco.asn.au

Don't forget our other sites:

www.lilydaletas.net – Lilydale community website



North East Pest Management

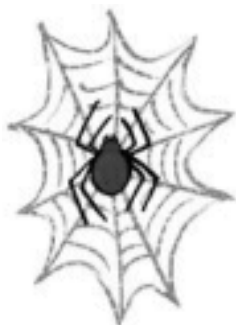
Phone 6352 7329

Mobile: 0429 163 705

All work fully Guaranteed



Ants
Bees
Carpenterbeetles
Cockroaches
Fleas
Millipedes



Possums
Rodents
Scorpions
Silverfish
Slaters
Spiders
Wasps

Locally Owned and operated
For your free quotes
Call Malcolm or
Sharon Bowden



LILYDALE DISTRICT SCHOOL SNIPPETS

Phone: 6395 1231

Fax: 6395 1492

Email: lilydale.district.school@education.tas.gov.au

PRINCIPAL'S REPORT

Welcome to Lilydale District School for 2008!

We had a really settled start to the school year last Thursday. Nearly 450 students from Kindergarten to Grade 10, and also including our adult VET students, have started another stage of their education. They arrived overwhelmingly in fine spirits, in uniform, prepared with all their gear and settled back into school very smoothly. What a great tribute this is to the Lilydale community, because I think it reflects the value families place on education.

As well as welcoming all returning students, I extend a special welcome to all new students. Besides all our new Kindergarten children, we have an influx of students in other grades from many parts of Tasmania, interstate and even overseas! This is great for a learning community because, of course, people from other places bring with them different perspectives and insights on a whole range of issues which helps us all reflect on our beliefs, values and assumptions.

Many of our teaching staff have been unofficially back at work for several weeks. It is testament to their commitment and professionalism that they give so freely of their time to prepare their classrooms and student learning materials so that everything is ready for Day 1. All teachers returned officially on Monday of last week and worked Monday – Wednesday on a program of professional learning which focussed on several school priorities for this year. (See the photos from one of the teacher workshops.)

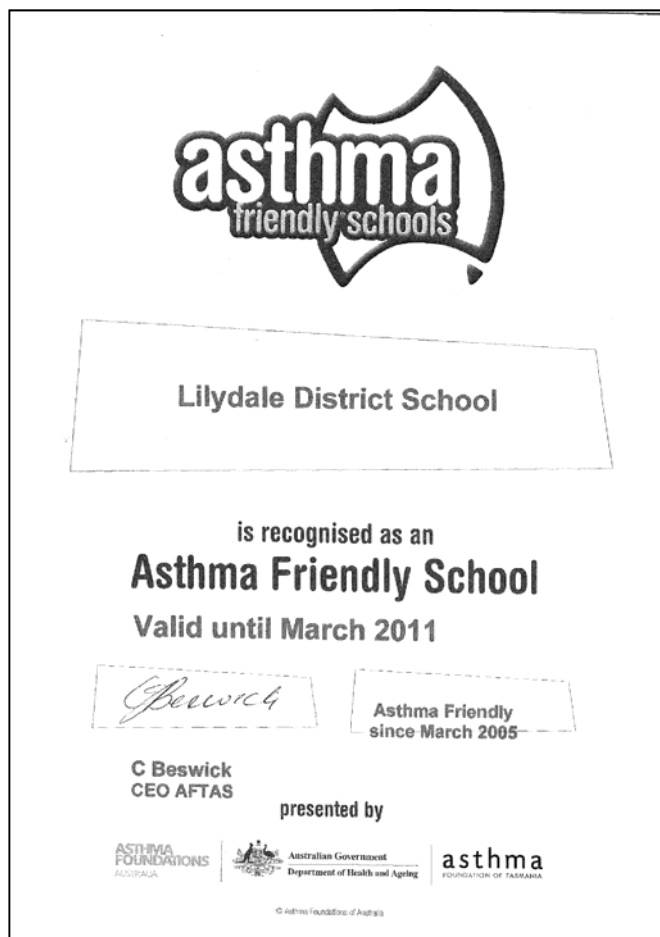
I would like to thank our team of support staff who worked hard to make sure the school was 'geared up' for the return of students last Thursday. Besides our administration staff who saw to book sales, uniform sales, enrolments, etc it also includes our attendants who did such a great job cleaning classrooms and preparing the grounds. Sincere thanks to *all* staff for their contributions.

The most significant staffing news is that our Art Teacher and new Chaplain, Mrs Kerry Lamb has

been critically ill in hospital over the last few weeks and will not be able to resume duties for some weeks. We are all relieved that Kerry is now out of hospital and well on the slow road to recovery.

Our Art Department has been boosted by the part-time appointment of Mr Marcus Wyton from Launceston College. Mr Michael House has been transferred to Lilydale on a Grade 6-7 class in our Middle School. Mr House was acting Co-Principal of Bracknell Primary last year. Miss Anita Batty boosts our HPE Department alongside Mr Gunn. Mr Simon Petrusma and Mr Alex Day are newly appointed IT technicians. And we also welcome UTAS Education student Miss Julie Matson who will be working with Mrs Brooks and Miss Stanfield for part of this term. A sincere welcome to all these staff members. We are very pleased to have secured their services.

Greg Morgan
Principal



Community Noticeboard

Easter Church Notice

Catholics are cordially invited to commemorate the redeeming death and glorious resurrection of our Lord Jesus Christ during Holy Week 2008.

- 16th March – Passion Sunday Mass
9 a.m. at Karoola
- 19th March – Wednesday of Holy Week
7 p.m. Sacrament of Penance
7.30 p.m Vigil Mass of the Last Supper –
at Lilydale
- 21st March – Good Friday
12 Midday at Karoola
- 23rd March – Easter Sunday
9 a.m at Lilydale



Interested in local history?

The Lilydale History Group meets from 7.30 pm on the 3rd Friday of May and August, and from 8pm in November and February, at the Old Courthouse, Lilydale. In months in which we don't meet we have informal group days or evenings where members of the public are most welcome to attend and discuss local history. Non-members are welcome to attend to discuss any aspects of the history of the district.

For further information: Write to:
The Secretary, Lilydale History Group,
PO Box 3, Lilydale, 7268

Telephone: Helen on 6395 2060 or
Tammy on 6395 6278

Email: lilydale_history_g@tasmail.com

Website at: www.lilydaletas.net/history



Lilydale Online Access Centre

Opening Hours:

Tuesday: 2-6pm
Wednesday 9am-1pm
Thursday 2-6pm
Friday 2-6pm
Saturday 10am-12 noon

Contact the Centre on 6395 1129

E-mail: lilydale@tco.asn.au or visit our websites

www.lilydale.tco.asn.au • www.hart.org.au
www.lilydaletas.net



Worlds Greatest Shave

Come and see Frea get shaved
Village Green March 15th



Pledge sheets and donation boxes will be in most of the local shops and any contribution will be greatly appreciated.

To sponsor Frea online by credit card, please log on to – www.worldsgreatestshave.com whilst there, you may want to have a look at her webpage. Click on 'Gallery', then click on the P in the alpha list. From this page you can read Frea's poem, or leave a comment or sponsor her.

STATE LIBRARY OF TASMANIA
YOUR LIBRARY

LILYDALE COMMUNITY LIBRARY
MAIN ROAD, LILYDALE

Phone 6395 1110

WE ARE OPEN

Tuesday 3.00 – 7.00
Friday 2.00 – 7.00
Saturday 10.00 – 12.00

Plenty to see and do

**Books, magazines, videos, CD's, DVD's, CD Rom's,
junior reference materials, request an item,
free access to the internet.**

**Search the State Library's catalogue on our website
at www.statelibrary.tas.gov.au**

Free parking available

March 2008

Mon	Tue	Wed	Thu	Fri	Sat	Sun
31					1	2 Pony Club Karoola Oval Clean Up Australia day
3 Progressive out Now	4 Lilydale Senior Citz 1.30 pm	5 CWA Lions 7.30 pm	6	7	8	9
10 Eight Hour Day	11 Senior Citz 1.30 pm Retirement Units 7.00 pm	12	13 Neighbourhood Watch Fire Station 8.00 pm	14	15 World's Greatest Shave Frea Peschar Village Green 2pm	16 Mass at Karoola 9am
17	18	19 Mass at Lilydale 7pm Lions 7.30 pm	20 RSL Senior Citz Clubrooms 7.30 pm	21 Good Friday Mass at Karoola midday	22	23 Easter Sunday Mass at Lilydale 9am
24 Easter Monday	25 Mary Walsh Centre 7.30 pm	26 Red Cross 11 am	27	28 Progressive deadline	29	30 RSL Bus Trip to Wynyard Daylight Savings Ends

Every Monday: *Valley Voices: Uniting Church, Main Rd, 7.30 pm* **Every 2nd Monday:** *Fire Brigade Training: 7-9 pm 6395 1260*
Every Tuesday: *Day Care: Main Rd 9-3, Senior Citizens: Clubrooms 1.30pm,*
Every Wednesday: *Karoola Playgroup: Karoola Hall 10 am, Tai-Chi: Uniting Church Hall 9.30 am, Lilydale Playgroup: Anglican Church 10-12*
Every Thursday: *Day Care: Day Care Centre Main Rd 9-3 • Every Friday: Senior Citizens Bowls: Clubrooms 1.00pm*

Lilydale Emergency Directory:

Fire: 000

Police: 000

Ambulance: 000

Launceston General Hospital: 6348 7111

Poison Information Service: 131126

Doctor: 6395 1455

6395 1258 AH

Pharmacy: 6395 1336

Need a Fire Permit, contact one of these people:

LILYDALE

Brigade Chief - Gavin Storay Ph: 63951360 and 0429 022154

2nd Officer - Dave Cleaver Ph: 0407 047 083

3rd Officer - David Dornau Ph: 0409 868 712

Permit Officer - Murray Dolbey Ph: 0427 846 249

AUSTINS ROAD/ROWLEY HILL ROAD

Permit Officer – Bob Smith Ph: 0428 954 194

Permit Officer – Shane Coleman Ph: 0407 263 120

LOWER TURNERS MARSH/BANGOR/KAROOLA

Permit Officer – Jeff Tonkes Ph: 6395 4495 or 0418 368351

LEBRINA

Chief & Permit Officer – Mark Wilson Ph: 6395 6179

Permit Officer – Robert Hawes Ph: 6395 6270

PIPERS BROOK

Chief & Permit Officer – Peter Harley Ph: 6382 7181

Permit Officer – Ian Sauer Ph: 6382 7179

PIPERS RIVER

Permit Off - Andrew Francombe Ph: 6395 4391 M 0418 133 917

Permit Officer - John Hurst Ph: 6382 7138

TURNERS MARSH/FINGER POST HILL

Chief: Leon King Ph: 6326 4363 0428 435 296

Allison King Ph: 6334 4106 0419 316 964

Lilydale District Progress Association Inc
PO Box 3
Lilydale, TAS 7268

Editing, Layout & Distribution:
Jayne Saddington
Ph: (03) 6395 1598
Fax: (03) 6395 1129
E-mail: lily_progressive@yahoo.com.au

The Lilydale Progressive is published monthly from February to December by the Lilydale District Progress Association Inc. Letters to the Editor (up to 200 words) and other copy may be left at the Lilydale Pharmacy. Articles may also be forwarded on floppy disk in any text format or via e-mail to:

lily_progressive@yahoo.com.au

Advertisers Please Note:

When submitting a new ad please indicate in writing, how many times you want it to be published. Ads received without notification as to times and issues will be repeated, and charged accordingly, until a notice of discontinuation has been received. This is not a threat but a sincere plea to make the editor's life easier. If you are interested in advertising in the next issue of the Lilydale Progressive, please contact the editor to discuss your requirements.

Current Advertising rates:

1/6 page	\$20	per issue
1/3 page	\$30	per issue
1/4 page	\$25	per issue
1/2 page	\$50	per issue
Full Page	\$100	per issue
Classifieds:	\$1	per issue

Classifieds



Steel Rio – suit shed slab etc. Weathered but new, 2 sheets. Best offer
Phone Cameron 63 95 1174

Family size trampoline only two years old, GREAT condition \$180 Hereford x 4 yr old, VERY healthy beef cow \$550 or will trade for two beef calves, brand new rangehood flue kit \$80 PH. boys clothes 000 - 2 winter and summer \$ 20 bags, maternity clothes, winter and summer \$80 bag

Phone 63954420 or 0418 375 872

Closing down Sale: March only

Potted plants, fuschia, carnation and dianthus, shrubs, ground covers etc. Indoor plants, mini day lilies (stellar d'oro) bulbs. Mixed daffs 8 x \$3, Ixia, Grapehyacinth 20 x \$2, rockery daff (hoop petticoat) 3 x \$2, Bearded Iris – yellow, black, lilac, purple and white frilled etc \$2 each. 2 only 8" potted Romney Coulteri (Tree Poppy) \$20 each.

Phone 63 95 4119

Approx 2 rooms old carpet and underlay - suitable for shack or shed.

Phone Strom 6395 1263



BARRETT'S COACH TOURS & ROSES TRAVEL INVITE
YOU TO JOIN THEM ON THE FOLLOWING DAY TRIPS AND EXTENDED TOURS

15 DAY KANGAROO ISLAND – MURRAY RIVER TOUR

Departs 02 March 2008 Explore beautiful Kangaroo Island followed by 5 day Cruise on Murray River travelling 556 kms from Wellington to Renmark passing through 6 Locks. Absolutely fantastic trip. **(Itinerary Available)**
\$3800.00pp T/s

MARCH LONG WEEKEND 2008 3 DAY TOUR Departing Saturday 08 March 2008: Far North West Coast including Arthur River Cruise, Dismal Swamp, Stanley and heaps more. Cost includes: Luxury Coach Travel, accommodation, all meals, cruise & entries. (itinerary available) \$490.00 pp. Twin Share/ \$582.00 Single Supp.

7 DAY NORFOLK ISLAND TOUR: Departing 29th March 2008. Itinerary available from our office.

26 DAY NORTH QUEENSLAND & OUTBACK TOUR: Departs 11th. June 2008: Includes, Aust Zoo, Whitsunday Islands, Cairns, Cooktown, The Lava Tubes, Karumba, Long Reach, Stockman's Hall of Fame, Rose Hill Averages, Cubbie Station Cotton Farm, Lightning Ridge and lots more. Itinerary Available

ROSES TRAVEL, Licence No TAS043, NOW HAVE AN EXTENSIVE RANGE OF MAPS FOR SALE – TASMANIA AND INTERSTATE as well as camping guides (all States), holidaying with cats & dogs and travel diaries. DON'T FORGET WE CAN DO YOUR TT LINE BOOKINGS (no extra charges). International Travel Consultant available to assist you with all your travel requirements – visas etc. (Secure sites for credit card payment) Travel Insurance & Gift Vouchers also available.

PH 03 6352 2186 FAX 03 6352 2268 Email: barrettscoaches@hotmail.net.au