



Volume 28, Issue 4

May 2007

THE LILYDALE PROGRESSIVE

Inside this issue:

Transportation Update	2
Karoola Playgroup	3
Lions Club CWA	4
Water Restrictions Senior Citizens Children's Exam Answers	5
Health Notes	6
Football Club Quirky Advertising	7
Mushrooms	8
Tas Regional Arts	9
Lilydale Progressive History	10
Kids in Churches	11
School Snippets	12
Leisure Time	13
Community Notice Board Calendar	14 15
Classifieds	16

Progressive Deadlines for 2007

Articles for inclusion can be left at the Lilydale Pharmacy or e-mailed to lily_progressive@yahoo.com.au by the following dates:

2007

May 25th
June 22nd
July 20th
August 24th
September 21st



Lilydale Online Access Centre

Elearn opportunities are still available at the Centre for 2nd term. If you'd like to learn more about your computer, or want to increase the skills you already have, Elearn is for you. This popular FREE course is being offered to limited numbers. Elearn is a 10 week online course held in conjunction with TAFE Tasmania. It covers basic computer file management and training in how to use the Internet, Microsoft Word & Microsoft Excel.

You receive a manual to work from and can use it either at home (if you already have a computer with Microsoft Office on it) or the whole course can be done at the Centre. There is no charge for using the Centre to do your course and there is always someone here to help you with any questions you may have. Once you have completed your assignments you receive a statement of attainment to cover the units you've completed. This will help if you want to go on to finish the complete Certificate 2 in Information Technology.

One of our previous Elearners had this to say:

"I found Elearn extremely beneficial. The learning experience was very interesting and I was impressed with the support from Tafe and Jayne at the Online Access Centre. I would recommend it to anybody who would like to get knowledge in the basics of computing. The fact that this course was free didn't hurt either. Apart from the fact that I learned heaps and enjoyed the course, the sense of accomplishment and build up of self esteem were extra benefits that I got from this course. After completing this course I decided to further my education and undertake Cert. II in IT."
Coralee Freeman

You are invited to a Community Forum on Tuesday 22nd May 2007 in the Lilydale School/Community Library at 7.30 pm to

BRAINSTORM

suggestions for the Online Access Centre.

The Centre Committee would like your ideas about:

- What we are doing well
- What we could do better
- How can we encourage more people to use the Centre
- What training courses we should offer
- Which new activities we should organise
- How we can promote the Centre

At the meeting we will gather ideas, tell you about some of our own and then offer you tea or coffee and some light refreshments.

If you are planning to come please let us know by contacting the Online Centre or the Pharmacy by the 18th May.

Online Centre phone

6395 1129

Or email: lilydale@tco.asn.au

Lilydale Pharmacy phone

6395 1336

If you prefer (or as well) you can submit suggestions, on paper, to suggestion boxes located in:

- The Pharmacy
- The Library
- The Online Centre

Or you can e-mail suggestions to:

lilydale@tco.asn.au

For more information about this or any other matters contact the Lilydale Online Access Centre on 6395 1129 Or email: lilydale@tco.asn.au

Mountain Meats

54 Mountain Rd
Lilydale TAS 7268

Ph 6395 1578



Wanted to buy
LIVESTOCK
No Stress - No Fuss
Sales of Beef, Lamb & Pork

Phone Phil Whiting
0407 877 206 or 6395 1578

"New Local Business"

B.C.S. Excavations



- ▲ Due to machine maintenance being done our machines are not available for hire at the moment.
- ▲ We will readvertise when we are up and running again.

PHONE BRETT STREET
Mobile: 0418 156 252 Home: 6395 6188

Bardenhagen's Supermarket



ATM

Pre Paid Mobile,
Home Phone
& Internet Cards,
Aurora Pay-as-you-go
is now available

Fresh Beaconsfield Bread
Plus all the Specials and Top Produce

Ph: 6395 1422

Transportation Update

Update to April Progressive re transportation of logs to Auspine Scottsdale.

Hon. Sue Napier MHA, on our behalf, contacted the Minister, Hon. Jim Cox MHA, on the 23rd March for information re the routing of the logs, in particular, if the logs were to be transported through Lilydale/Golconda. Follow up emails were sent and Mrs. Napier kept me informed by email as to progress or lack of.

The Minister, in a letter, replied on the 16th April....
"Thank you for your email dated 22 March regarding the possible route for transporting pine logs from the West Coast to the Auspine mill in Scottsdale.

I understand, Auspine is considering both sea and road transport for the movement of pine logs from the West Coast to its Scottsdale mill. If the logs are transported by road, it is likely that the transport route would follow the State's approved High Productivity Vehicle (HPV) (B-Double) network (see attached map), reflecting the likely use of high productivity vehicles. This network is based on a professional assessment of the safety, geometry and physical condition of the individual road segments in catering for a higher mass freight task.

The North East section of the HPV route includes Birralee and Frankford Main Roads, the West Tamar, Batman and East Tamar Highways and Bridport Main Road. Based on the HPV network, the route does not include the Lilydale/Golconda corridor.

The final decision regarding transport mode or route is a commercial decision for Auspine.

I trust this information is of assistance to you.

Yours Sincerely

Jim Cox MHA

Minister...."

My translation: It looks like we are safe at this stage, but, keep your eye on the ball (final paragraph about commercial decision for Auspine). Many thanks to Sue Napier, who kept following up and kept in touch about our concerns. Her help is greatly appreciated.
Carol Charlton

Lilydale History

From "Tasmania's North East"

by A.W. Loone (app. 1927)

"There are, in the town of Lilydale, five churches-English, Methodist, Roman Catholic, Presbyterian and Salvation Army, and there is no hotel there. At one time there was but it has been closed for a great number of years, While everything is being done to force an hotel upon the people of this town, the majority of the people are set against it, and the Licensing Bench have stood firm against it also. The

fight between those who wish to secure a licensed house and the people of the town, who will not sanction it, is so keen that this case has even been taken to the Federal High Court. This is the first case of this kind in Tasmania if not Australia."

According to family history George Titmus was the Proprietor of the Golconda Hotel and in 1926 applied to have his hotel licence transferred to Lilydale. After taking his case before the High Court of Australia George was successful in obtaining his transfer and became the holder of the licence in 1931.

Karoola Playgroup

Firstly we would like to welcome all the new mum's and children that have joined our Playgroup this year, each week we are getting bigger and better. Thank you to all new and existing members for making each week such an enjoyable time for all.

This month we went to Old Mac's Farm at St Leonards. There the children were able to feed the chickens, baby deer, kids, ponies, sheep and alpacas. They were able to hold baby ducklings, guinea pigs, rabbits and piglets. Parents and children had an enjoyable morning.

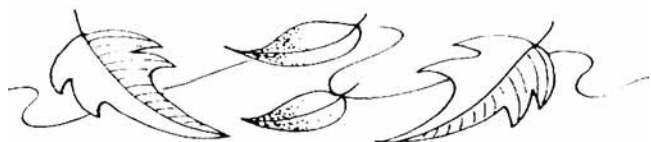
Easter Bunny visited the children and left them chocolate rabbits and paper eggs for the babies.

As we haven't had set crafts each week, the children have been taking advantage of the lovely weather by playing outside in the sand pit, on the swings or riding bikes. Each week the children all look forward to Playgroup and don't want to go home when it finishes.

We are currently running a Mother's Day raffle with some great prizes. Tickets are \$1 each or 3 for \$2.

If you are interested in joining our playgroup you will be made most welcome. It is suitable for children from birth to 5 years and their parents or grandparents and we meet every Wednesday at the Karoola Hall (unless we have an outing planned) from 10-12. It costs \$2.50 per family and morning tea is provided for adults (please bring morning tea/lunch and drink for children). We have a printed schedule of activities for the term, so if you would like us to send you one or if you require any further information about playgroup, please contact us on the numbers below. Otherwise just turn up on Wednesday

President: Elise Smith 6395 4118
Treasurer: Kathryn Scott 6395 2069
Secretary: Jackie Hawes 6394 8075



Lilydale-Karoola Veterinary Service

a branch of Scottsdale Vet Service

Main Rd, Lilydale Ph: 6395 1271

ALL HOURS

Ron Harris BVSc

Rebeca Smith BSc BVMS



CONSULTING HOURS

Mon-Fri: 9-10 am & 5-6 pm

By appointment

All species attended

Full Surgical, Laboratory, Dental, Radiology,
Clipping & Grooming Services available,
Johnes Disease Accreditation, Mastitis,
nutrition & reproductive programmes for cattle

The Lollydale Shoppe

Under New Management

For old fashioned confectionery,
fine pralines and truffles, and
Tasmanian Gourmet Sauces.



**Lollies the way they used to be.
Come in and try some now.**

Open Wednesday to Sunday - 9 am - 5 pm
1976 Main Rd, Lilydale—opp the Post Office

Whispering Wisdom

Now Open

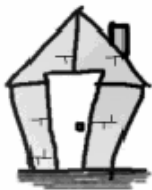
Beautiful gifts to inspire, uplift
and empower those you love
â including yourselfâ

Trading

Wednesday to Sunday inclusive
9am - 5 pm
(inside the Lollydale Shoppe)

Carolynne - 0439 016 500

Wilkin Design



For all concept, designs,
drafting and organisational
duties in the Building Industry

Todd Wilkin
P.O. Box 96
Lilydale, 7268

Phone: 6334 5800
todd@wilkindesign.com.au

Geoff McCarthy

*Sand & Slate
Tip Truck Hire
Livestock Transport
Concrete & Road Gravel*

Phone 6395 4278 Or
Mobile 0408 133 748

BORBAS TV and ANTENNA SERVICE



Digital antenna
Set ups for digital set top
boxes
Satellite dishes
New connections

Laszlo(Les) & Eva Borbas
Phone: 6395 2048



Lions Club News

Almost \$600 was raised from our Easter Raffle which was drawn on Easter Saturday.

Prizewinners were as follows:

- 1st - Frea Peschar
- 2nd - Peter McMurray
- 3rd - John Alford
- 4th - Chris Dockray
- 5th - Tiger Pollard

Special thanks to Tony Mitchell and Bardenhagen's Supermarket for their support, and all those who bought tickets.

New office bearers for 2007/2008 are:

President: Murray Dolbey,
Secretary: Amanda Olson and
Treasurer: Julie Livingston.

Recent activities include completion of a fencing project, a St Patrick's Day theme night, a club visit to Westbury Lions Club and attendance at Anzac Day ceremonies in Lilydale.

CWA

The Country Women's Association (CWA) began in Tasmania in 1936 and the first Tasmanian meeting was held at the Launceston Town Hall on February 14th that year.

Lilydale Branch began on April 4th 1939 so this year we are celebrating our 68th birthday.

Meetings are held on the first Wednesday of the month from February to December, usually at 1.30pm although we occasionally meet in the morning for a craft session or demonstration. We then enjoy a chat over a shared lunch followed by the meeting.

Members always attend the 11am Anzac Day Service when we lay a wreath to honour those who gave their lives to keep our country and way of life safe.

At present we are looking for new and different Fundraising ideas so we can continue to support to local worthy causes. In the past we have contributed to the Village Green, Mattie's Playground, local and interstate bush fire appeals, we support the Winter Relief and Empty Stocking fund as well as many other causes. We also contribute to the School Speech Night and the Launceston Show.

Our 2007 AGM will be held at the Uniting Church at 10.00 for 10.30am on May 2nd and new members are invited to attend, we are a friendly bunch and you would be made welcome.

Members the May Roll call is an article for Baby Box and lunch to share as our monthly meeting will follow in the afternoon.

Water Restrictions

Lilydale Township – water restrictions placed on the Township in December 2006 are now removed, from Saturday 7 April 2007. We thank residents and business people for their co-operation.

Senior Citizens Club

Our club days are Tuesday and Friday afternoons. All Seniors are welcome to come along for a friendly chat and afternoon tea, give us your ideas for any activities you are interested in and bring a friend.

Earlier in the month, 2 teams travelled to Ravenswood Carnival, our no. 1 team on the day was skipped by Carol. They missed out by 1 point, good luck next time folks.

Our Northern Regional bus trip which was held on the 25th February was a huge success. We travelled the Bass Highway, called into the cherry farm at Spreyton and then the Latrobe market. We then travelled to the Blue Wren Restaurant, had a piping hot 2 course meal. On our return we went through Railton and stopped at the cheese factory. Quite a few purchased cheeses, while others decided to keep cool with ice-creams.

Our carnival held earlier this month in the Memorial Hall was a great success. We had seven mats down, as we have only 5, we borrowed 2 from Mowbray which we really appreciated. Everybody enjoyed the hot meal prepared by our loyal workers, we could not do without them.

We hope to have another carnival in August. Tamar Valley day is coming around quickly, at George Town on the 14th May.

Our pennant teams are enjoying their games. We have played one away and one in our Club rooms. It is the first year Lilydale has been able to obtain home games. So we hope that we can win some.

Our next meeting will be held at the club rooms on the 1st May at 1.30 p.m.

See you all next month
Robyn East.

Children's Science Exam Answers:

Q: Name the four seasons.

A: Salt, pepper, mustard and vinegar.

Q: Explain one of the processes by which water can be made safe to drink.

A: Flirtation makes water safe to drink because it removes large pollutants like grit, sand, dead sheep and canoeists.

Q: How is dew formed?

A: The sun shines down on the leaves and makes them perspire.

Q: How can you delay milk turning sour? (brilliant, love this!)

A: Keep it in the cow.

Q: Name a major disease associated with cigarettes.

A: Premature death.



Q: What does the word "benign" mean?

A: Benign is what you will be after you be eight.



Wayne Riethoff
0418 504 742

Elders

No 1 in Australian Rural Real Estate

180 Cimitiere Street, Launceston



Sharon Fahey
0409 188 249

Wayne & Sharon are actively seeking new properties, large or small, cleared or bush, on small allotments or larger productive farms to match our ever increasing demand from mainland buyers for our Envidable lifestyle.

Please phone Sharon or Wayne if you have plans to sell in the near future.

Your health matters Lilydale Pharmacy

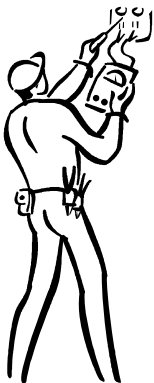
Mouth guards,
Junior, youth and adult sizes from \$6.50
Strapping tape
Knee supports
Ankle supports
Shock absorbing inner soles
Arch supports



Open Monday to Friday 9am to 5pm
Colin and Helen Denney.
Phone 63951 336

Nelson Clark Electrical Contractor

Qualified A Grade Electrician C1420



Now Available
20 years experience
in Domestic and
Industrial Work

Phone 63951212



For all your hair care needs
at our convenient location

Closed: Mon
Open: Tues - Fri: 9 am - 5 pm
Sat - By appointment only
House calls available

Phone Heather on 6395 1365



Health Notes from the Lilydale Pharmacy

Quitting for good

When it comes to smoking, anytime is a good time to quit; and it's never too late. Recent studies have shown that for smokers who quit at age 50 the risk of a tobacco related death is reduced by about two thirds; and for those who stop before middle age the risk is little more than for non-smokers.

However, becoming and staying a non-smoker doesn't happen by accident. Smokers who plan before they quit are significantly more successful than those who don't. The decision to quit must be yours and yours alone, but to help you plan for long term success you should enlist the support of family and friends. Your pharmacist can also offer you valuable support.

Nicotine replacement therapy (NRT) could be an option worth considering. These nicotine substitutes help to treat the withdrawal symptoms and cravings which can make it so difficult to quit.

When you do stop smoking, your body will most likely still have a need for nicotine (the addictive component of cigarettes) and this is what creates the urge to smoke again. By taking nicotine in a "clean form" (that is without the dangerous carbon monoxide and tar ingredients) the physical withdrawal symptoms are reduced, allowing you to focus your energies on breaking the smoking habit.

The effectiveness of Nicotine Replacement Therapy in aiding cessation is well established and is supported by the highest level of clinical evidence. Nevertheless, some people have concerns about the continued use of nicotine to help smokers quit. These misconceptions were addressed in a recent article in the journal Australian Pharmacist. The reality is; - using NRT to quit is always safer than smoking.

Four NRT products are currently available in Australia: patches, gum, inhaler and lozenges. All these medications are now available from pharmacies without prescription. A prescription-only product known as bupropion may also be useful for some smokers who want to become committed quitters.

Using the gum requires a different chewing technique than for normal gum. Each 'chew' on nicotine gum releases nicotine, so too much chewing can cause a nicotine headache. The recommended way is to have 2 or 3 chews, then 'park' the gum in your mouth for a few minutes before having another chew. It may take up to 20 minutes to release all the nicotine from the gum.

Our QuitX nicotine patches cost only \$25 per week. Compare that to the cost of smoking.

Come in to the pharmacy and talk to us about quitting. To quit will be the best health decision you will ever make for you and your family.

Lilydale Football Club

As we have only played one roster game and had 2 weeks off for Easter and a bye, football news is very scarce.

In the 1st game at Winnaleah all three teams had big wins.

The Under 16's won easily, with little opposition from Winnaleah, but Lilydale boys played very good football. Hopefully, their next game against St. Helens will be a closer encounter.

Alex Blair and Taylor Grimes up from last years Under 16's as well as Beau Tuthill and Kevin Avent, who had already played a game in the Under 16's, played in the Seconds and their fitness showed out in the last quarter. They were seen playing through each other, carrying the ball from one end of the ground to the other, quite often.

Even though the seniors had a good win in their 1st game, they should not expect it as easy the next round as Winnaleah has several players to come in.

Cade Haines played an excellent game to keep Winnaleah full forward – Steven Barron scoreless. It is a long time since that has happened as Steven has kicked over 100 goals in past seasons. Levi Tuthill was our best player, closely followed by Zac Illes, Gary Knight, Cade Haines, Joe Rattray and Tom Arnold in a good team effort. This was a very good start to the season for the Club and hopefully we can continue on our winning way.

Games:

April 28 th	Branxholm v Lilydale
May 5 th	Lilydale v Ringarooma
May 12 th	Crows v Lilydale
May 19 th	Lilydale v Bridport
May 26 th	Lilydale v Winnaleah

Coming social events:

May 5 th	Disco – Darren Lloyd
May 19 th	Fancy Dress Disco – theme – “Priscilla Queen of the Desert” – everyone to dress up to make a big night!!

Quirky Advertising

In a Podiatrist's office:

"Time wounds all heels."

On a Septic Tank Truck:

Yesterday's Meals on Wheels

On a Plumber's truck:

"Don't sleep with a drip. Call your plumber.."

REX LETHBORG & SON FUNERAL SERVICES



Michael Lethborg
Director



*Prearranged &
Prepaid Funerals
Monumental Work
Professional & Caring Service
Serving All Areas & Denominations*

Scottsdale • 6352 2659
Tamar Valley • 6382 4124

Fax: 6352 4050 24 Hours • Seven Day Service

UPHOLSTERER
Stephen Griffin
6395 1323

Mobile: 0419 951 323
Brown Mountain Rd
Underwood

For all types of furniture upholstery. Extensive range of fabrics and vinyls available.

Free Quotes—No Obligation



Accredited

GreenPlumbers®

SUPPORTING OUR COMMUNITY

Simon A Lockett
0408 995 012

BACKHOE HIRE

4 x 4 with extender dig

General
Earthmoving,
Foundations,
Footings, Drains,
Backfilling,
Clearing Etc



FOR A FREE NO OBLIGATION QUOTE PHONE

**TONY PINNER ON MOBILE:
0419 379 368 OR 6395 4248**

Mushrooms

Delicious, low in fat and packed with nutrients, mushrooms come in many varieties and are a highly versatile ingredient.

Sensitive to light and temperature, mushrooms grow on decaying matter or in harmony with living plants and trees. The first cultivated mushrooms were the champignons of Paris, which were grown in caves filled with horse manure around the city. Most introduced varieties cultivated in Australia are affordable, accessible and fast becoming more than just 'meat for vegetarians'.

Types of mushrooms:

Pink oyster: Pink oyster, also known as the flamingo oyster, has the same taste and texture as the oyster mushroom.

Button: The button or white mushroom is the most commonly available mushroom. It is picked before the cap opens to expose its grey gills.

Cup: Cup mushrooms are the product of a mature button mushroom. Similar to the button, their caps remain closed and their flavour is slightly stronger.

Enoki: The delicate enoki is grown as a cluster of small white-capped, long-stemmed mushrooms. Also called enokitake, they can be eaten raw or lightly cooked in soups and stir-fries.

Shimeji: Also known as beech mushrooms, the shimeji is a Japanese variety grown in clumps with short, thick stems. Colour ranges from whitish grey to pale brown.

Portobello: These large mushrooms are ideal for grilling or baking due to their size and meaty flavour.

Swiss brown: Similar to the button mushroom, yet with a firmer texture, the Swiss brown has a light brown

Natural Therapist

Qualified Medical Herbalist

6395 2080

- Medicinal Herbs
- Remedial and relaxation massage
- Flower Essences
- Yoga classes
- Relaxation techniques

Libby Schilling
DBMMCMATMS

Lilydale Post Office & Gorgeous Gifts

1975 Main Road, Lilydale, Tasmania 7268
Props. Tom & Chris Dancer • Phone/Fax-(03) 6395 1177

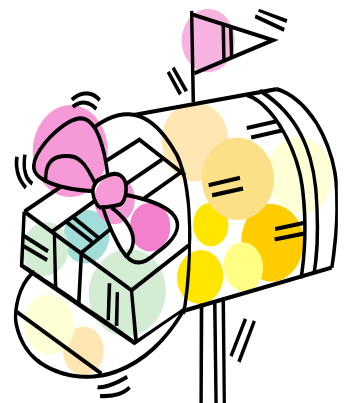


Mother's day is just around the corner and some gorgeous new lines have arrived at the Lilydale Post Office. Most of our customers have seen the new rustic and floral chinaware, displayed at the front counter, which have included teapot stands, mugs, spoon rests, pepper and salt shakers and many more.

This new line has been well received with many items already sold out.

A new horse range is also now also in stock with impressive ornaments at extremely good value. Mothers Day cards are also available for only \$1.00. So pop into the Lilydale Post Office and view Gorgeous Gifts for an inexpensive, good quality gift that will be sure to please your much loved Mum.

See you there!!!!



cap, which is sometimes slightly mottled.

Black wood ear: This mushroom has a delicate flavour and is prized more for its slippery, yet crunchy texture when cooked.

White cloud ear: Named after its cloud-like appearance, it is also called white jelly fungus, which denotes its jelly-like texture.

Oyster: Oyster mushrooms are named for their white shell-like appearance. They have soft delicate flesh and are available in pink and yellow varieties.

Shiitake: Native to Asia, shiitake mushrooms have dark umbrella-shaped caps and a spongy texture. They are used extensively in Chinese and Japanese cuisine.

Stuffed Mushrooms: serve 8.

- 1 dozen fresh large mushrooms
- 1/2 cup melted butter, divided
- 2 tablespoons finely chopped green bell pepper
- 3 tablespoons finely chopped onion
- 1 1/2 cup fresh bread crumbs
- 1/2 teaspoon salt
- dash black pepper
- dash ground cayenne pepper
- Parmesan cheese



PREPARATION:

Directions for stuffed mushrooms
Clean mushrooms; remove stems, leaving caps whole. Chop stems. Sauté mushroom caps in 3 tablespoons of butter; set aside. Sauté chopped stems, green pepper, and chopped onion in remaining butter until onion is tender; stir in bread crumbs, salt, pepper, and cayenne pepper. Stir to mix well. Stuff each mushroom cap with bread crumb mixture; sprinkle each stuffed mushroom with a little Parmesan cheese. Place stuffed mushrooms in a greased baking dish. Bake at 325° for 15 minutes.

Tasmanian Regional Arts – Lilydale Branch

Living Artists Week – 24th August to 2nd September.

Local Connections

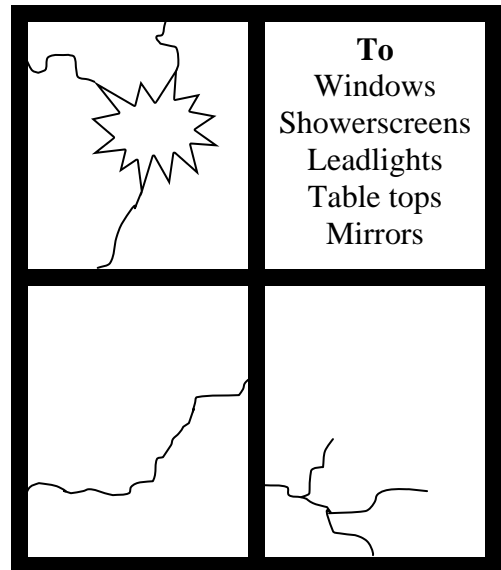
Visual Art Exhibitions in 22 Communities
Lilydale being one of the 22 Communities, we are inviting YOU to participate. One piece of work from each exhibitor, any medium.

This Exhibition is NOT restricted to professional artists. Be proud of your talents and show us all what you can do.

Registration forms need to be sent to:
Head Office, Tasmania Regional Arts by the 3rd May.
The entry forms can be downloaded from:
www.tasregionalarts.org.au or ring 64 26 2344.

There is a \$10 entry fee per person and exhibits can be for sale.

GLASS REPAIRS



Call Trevor on 0418 335 024

For friendly and reliable service.

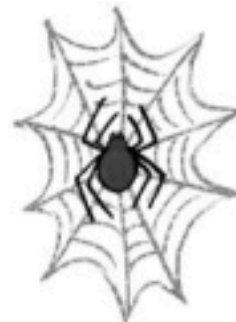


North East Pest Management



Phone 6352 7329
Mobile: 0429 163 705
All work fully Guaranteed

- Ants
- Bees
- Carpetbeetles
- Cockroaches
- Fleas
- Millipedes



- Possums
- Rodents
- Scorpions
- Silverfish
- Slaters
- Spiders
- Wasps

Locally Owned and operated

For your free quotes

Call Malcolm or Sharon Bowden



WILLIAMS BODYWORKS

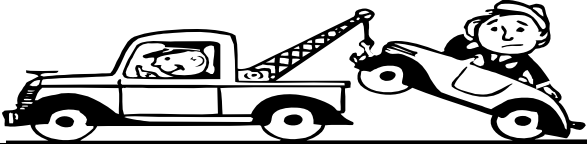
DOES YOUR CAR NEED

- = Panel Beating =
- = Spray Painting =
- = Chassis Work =
- = Car Detailing =

*Insurance or private repairs. See Col for a free quote.
With over 20 years experience in smash repairs
your car will look like new!*

Cnr Whites Mill and Lilydale Roads

Phone 6395 1391



Lilydale Antiques and Old Wares

Buying and selling fine antique furniture, collectibles and memorabilia, paintings and prints, jewellery and unusual old (and not so old) wares.

Come in, browse and reminisce - it's surprising what you might find - all welcome.

Open Friday to Monday - 10 am to 5 pm
1976 Main Rd, Lilydale - opp the PO
Contact Ian or Jillian on 6395 1007, or
lilydaleantiques@aapt.net.au

Need Help with your weeds?

Quikspray Unit on Trailer

Available For Hire

- \$25 per day
- Includes 200ltrs of mixed chemical
- 100m hose with radio controlled retraction
- Very easy to use



Contact Lilydale School Farm for bookings

6395 1478

In school holidays and weekends phone
Greg Duke 0407 882 595 or

Lilydale Progressive History

Thanks to Mary East, who provided us with a copy of the 1st ever Progressive, you may find this interesting.

BACK THEN:

Extracts from the first Edition of the Lilydale Progressive October 1980 (two A4 pages).

"The Lilydale Progressive is simply a means of communicating to people of the Lilydale district what progress is being made by the District Progress Association. It will be published once a month (excluding December and January) to report on the activities of your P.A."

The present Progress Association – there was an earlier one – came into being as the result of a public meeting of Lilydale residents (called by Messrs Joe Cocker, Tim Denny and Alf Kerkham) on 20th September, 1968, because a great deal of concern had been expressed throughout the district about the Lilydale Council's decision to move the council chambers to Newnham and the effect that this might have on the district. It was in the climate of the following motion that the Association was formed:

"That the moving of the council offices from Lilydale to Newnham was not in the best interests of the Lilydale Municipality."

The first meeting of the Lilydale District Progress Association was held a fortnight later on 4th October, 1968, and a constitution was adopted. This constitution is still in force and includes the aim 'to promote the progress and improvement of the Association's are...' In practical terms this aim has meant attempting to achieve, as the 1971 Annual Report indicated, such things as 'improved drainage and sewerage for Lilydale'.

Over the past twelve years the Progress Association has been involved in a variety of issues from better town planning to a cleaner water supply, from better roads to the development of the Falls Reserve, from the fight for improved television reception to the establishment of housing for elderly citizens, from the improvement of the Memorial Hall to donations to the District High School. The measure of achievement in this involvement has varied – more progress has been made in some areas than in others. But the main aim has continued to be promoting progress and improvement.

BETTER FM TRANSMISSION?

Telecom Australia, in replying to a recent letter from the P.A, recognises that in some parts of the Lilydale township, FM radio reception "will be difficult due to the fact that the direct path to Mt. Barrow is obstructed by Mt. Arthur. This, means that indirect

signals reflected from other geographic prominences could be received and these may cause distortion of the "stereophonic programme". Telecom Australia indicates that this problem "can sometimes be alleviated the use of a "well-designed receiving antenna" and it is suggested that if anyone needs advice about how to improve FM reception they should contact the Postal and Telecommunications Department, PO. Box 631 Sandy Bay, 7005.

BETTER TV?

The battle for better television reception in the Lilydale district has been waged by the P.A. for a number of years without any apparent ground being won. Other parts of Tasmania have the same problem and have been fighting the same battle. On 23rd August, 1980, the *Examiner* reported that a national television translator for East Devonport, Quoiba and Spreyton had been included in the current three year programme of the Postal and Telecommunications Department. Armed with this latest information the P.A. has sent off another 'rocket' to Telecom Australia in a fresh bid to get a television translator and, thus, better reception for Lilydale.

BETTER AND SAFER ROAD?

The Secretary is in correspondence with the Deputy Premier, the Hon. Michael Barnard, MHA asking for his further assistance on the issue of a safer and better road from Lilydale to the Prosser's Forest turnoff. The November *Lilydale Progressive* should have some progress to report on this vital question.

1980-81 EXECUTIVE

The current Progress Association Executive is as follows:

President:	Mrs E.W. Grose
Vice-Presidents:	Mrs H.B. Griffin Mr S. Fleming
Secretary:	Mr P. Holwill
Treasurer:	Mr C. Ikin
Committee:	Mrs A.M. Bardenhagen Mrs M. Schindler Mr R. Andrew Mr M. Kelp Mr C. Penny Mr B. Pirkis Mr J. Thompson. Mr W. Turner

Ed: Don't you find it very strange that after 27 years we're still going on about exactly the same issues!!!!

We hope to bring you more articles like this in the future. If you have some interesting anecdotes or historical information about your group please let us know.

Kids in Churches:

After the christening of his baby brother in church, Jason sobbed all the way home in the back seat of the car. His father asked him three times what was wrong. Finally, the boy replied, "That preacher said he wanted us brought up in a Christian home, and I wanted to stay with you guys."

One particular four-year-old prayed, "And forgive us our trash baskets as we forgive those who put trash in our baskets."

A little boy was overheard praying: "Lord, if you can't make me a better boy, don't worry about it. I'm having a real good time like I am."

A mother was preparing pancakes for her sons, Kevin 5, and Ryan 3. The boys began to argue over who would get the first pancake. Their mother saw the opportunity for a moral lesson. "If Jesus were sitting here, He would say, 'Let my brother have the first pancake, I can wait.' Kevin turned to his younger brother and said, "Ryan, you be Jesus!"



Weedon Real Estate

66 George St, Launceston

(03) 6331 3566

Weedon Real Estate has been successfully listing and selling properties in the Lilydale area for well over 15 years and are very familiar with everything this district has to offer, which is always a positive selling point to prospective purchasers.

After a slow start to the year the market has been very active over the last two months with Weedon Real Estate selling many of the local properties and is need of new listings.

If you are interested in a no obligation appraisal of your property why not contact our local agent Tom Dancer who has over 18 years experience in Real Estate on 63 95 1546(AH) or 0419 369 162.

Weedon Real Estate can offer you free advertising (including exposure on 3 web sites) and reasonable selling charges.

LILYDALE DISTRICT SCHOOL SNIPPETS

Phone: 6395 1231

Fax: 6395 1492

Email: lilydale.district.school@education.tas.gov.au

NEW SCHOOL BUS SIGNAGE

New signage has just been introduced for school buses to improve safety for children.

The front of school buses will now feature either the 40km/h sign, or the words "school" or "school bus" while the rear of the buses will bear the 40km/h sign with the additional words "when lights flash."

It's vital that we eliminate any confusion for motorists, so they understand that they are required by law to slow to 40km/h when they are within 50 metres of a bus with flashing lights. This applies to cars travelling in both directions – not just those following the bus.

Motorists are also reminded of the parking restrictions around 40km/h school zones. To allow good vision for all concerned, parking is not permitted 20 metres before, or 10 metres after these zones.

Take care when dropping off or picking up your children from school. Where possible you should collect and drop off children on the same side of the road as the school bus. If you must park opposite a bus stop, get out of the car and cross with your child holding your hand.

Farming News

This year at the Lilydale District School Farm we have been doing a number of things which include gardening, work to do with the vineyard, typing courses, rearing calves, horse handling and fencing.



This year we were very unfortunate not to have a crop of grapes due to frost late last year. We are also learning to quick type, which is rather hard. We have been using the website (www.goodtyping.com). If you would like to learn to type faster it is a good course to use, it takes you through step by step to typing faster and it even improves your writing accuracy.

Report by Robyn Shephard and Katie Gerdes.

MATTIE'S PLAYGROUND RUN

The total stands at an impressive
\$17,444.26

Planning is well underway for the Matthew Goodall Memorial Playground.

Sincere thanks to everyone who has contributed. (A friendly reminder regarding any outstanding sponsorship funds. Please forward these as soon as possible).



Art Room News

General Update:

So far the year is off to a great start!!

With students of all ages in the Art room it seems to be constantly filled with fun and creativity.

Students in grade 9 and 10 are looking at the Power of Words and how to effectively voice their opinions through their Art work.

Students in grades 5 and 6 are looking at Art Elements and Principles and their place in creation of their Art, as well as focusing on gaining skills and enhancing current ones.

Students in 1 / 2 and 3 / 4 are 'Inspired' – looking at all the different reasons behind making art, what we can be inspired by and using new and unfamiliar materials. Many new skills are being gained here!!

Students in Prep are experimenting with colour and materials and looking at creating Art around things that are important to them.

Future Plans:

We currently have a muralist working in conjunction with a group of staff, students and various community members. Naomi will be creating a beautiful mural on the wall of the boundary building next to our Carpark. The mural is going to capture Lilydale – its culture, its community, its history and its future. Students have been working on drawings, ideas and history facts to contribute to Naomi's research and planning of the mural and it is envisaged that all students at Lilydale District will have some involvement in the mural as it is created.

If you have any ideas or facts that may help us in the pursuit of the perfect mural to show case Lilydale – please feel free to contact me at the school.

Art work:

The art room is currently undergoing a massive clean out of students work (past and present). Please see me in the art room to collect any work you wish to keep as there are some outstanding pieces of work just waiting to be collected. Feel free to collect and pass on any art work from past students.

Mrs Lel Aufder- Heide



Leisure time – looking for something to do or go to?

Upcoming Events in/around Launceston

April 28 to 29 "Power from the Past" -Symmons Plains
April 29 to Uni Revue Princess Theatre Princess Theatre (03) 6323 3666
May 2 - 2007



MAY

May 1 Links Golf Championships At Barnboughe Barnboughe Dunes, Bridport
May 3 to 5 Agfest Quercus Park
May 4 Launceston Pacing Club Sunday Twilight Tasman Park, Mowbray
May 20 Launceston Pacing Club Sunday Twilight Tasman Park, Mowbray
May 26 AFL Round 9 - Hawthorn vs West Coast Aurora Stadium
May 29 White Wreath Day in Remembrance of All victims of Suicide



Statewide

22 Mar - 06 May Building an Island Collection - Burnie Regional Art Gallery, Burnie
22 Mar - 06 May Undercurrent - Burnie Regional Art Gallery, Burnie
14 Mar - 30 Jun Alice at the Allport Allport Library and Museum of Fine Arts, Hobart
10 Mar - 03 Jun Water Music - Queen Victoria Museum and Art Gallery , Invermay



City of Hobart Floral Shows:

Admission is FREE to all of the City of Hobart Floral Shows.
The shows are conducted in either the historic Town Hall or the City Hall

Chrysanthemum Show	Friday 4 May	1.00 pm - 6.00 pm
	Saturday 5 May	10.00 am - 4.30 pm
	Sunday 6 May	10.00 am - 4.00 pm



Attention - Belated 40th Birthday Greetings

The date may have slipped by un-
eventful and smooth as birthdays go,
BUT, never fear it's gone, but you'll
never be forgotten!

Mr Paul (dodge about) Br__ _d

Happy 40th

P.S. Now it's time to look over your
shoulder!

Luv
K, A, R & B V.



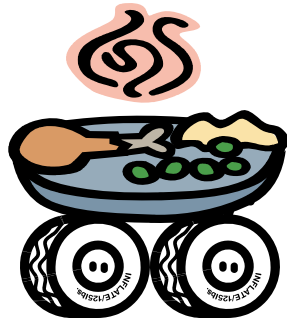
COMMUNITY NOTICEBOARD

Volunteers Wanted:

Lilydale/Karoola Red Cross Meals on Wheels service is in need of more volunteers to deliver frozen meals to members of the Community in receipt of the service.

A couple of hours on the occasional Tuesday is all that is required. If you have a few spare hours and would be willing to help out please contact:

Margaret Mills on
63 95 4411 or
Billie Parry on
63 95 4173.



Interested in local history?

The Lilydale History Group meets from 7.30 pm on the 3rd Friday of May and August, and from 8pm in November and February, at the Old Courthouse, Lilydale. In months in which we don't meet we have informal group days or evenings where members of the public are most welcome to attend and discuss local history. Non-members are welcome to attend to discuss any aspects of the history of the district.

For further information: Write to:
The Secretary, Lilydale History Group,
PO Box 3, Lilydale, 7268

Telephone: Helen on 6395 2060 or
Tammy on 6395 6278

Email: lilydale_history_g@tasmail.com

Website at: www.lilydaletas.net/history



Lilydale Online Access Centre

Opening Hours:

Tuesday: 2-6pm
Wednesday 9am-1pm
Thursday 2-6pm
Friday 2-6pm
Saturday 10am-12 noon

Contact the Centre on 6395 1129

E-mail: lilydale@tco.asn.au or visit our websites

www.lilydale.tco.asn.au • www.hart.org.au
www.lilydaletas.net



Lions Needs You

WE NEED MEMBERS.
ANY AGE OVER 18 MALE OR FEMALE

*A fun way to meet and
help the community*

Phone: Amanda Olson—6395 4347
Stephen Griffin—6395 1323

Lions Club of Lilydale



New to the Area?

Did you know Lilydale
has its own Playgroup?

Come along and join the fun.

At the Anglican Church, Station Rd, Lilydale
Every Wednesday (during School Terms)

10am-12pm

\$3 per family - Ages 0-5 years

- Tea, Coffee, Milo & bikkies supplied for Adults.
- BYO drinks & snacks for the kids.
- Get to know other Parents/Carers & kids that will grow up with yours.
- We have lots of safe play things for all pre-school kids including babies.



YOUR LIBRARY

LILYDALE COMMUNITY LIBRARY
MAIN ROAD, LILYDALE

Phone 6395 1110

WE ARE OPEN

Tuesday 3.00 – 7.00
Friday 2.00 – 7.00
Saturday 10.00 – 12.00

Plenty to see and do

Books, magazines, videos, CD's, DVD's, CD Rom's,
junior reference materials, request an item,
free access to the internet.

Search the State Library's catalogue on our website
at www.statelibrary.tas.gov.au

Free parking available

May 2007

Mon	Tue	Wed	Thu	Fri	Sat	Sun
	1 Lilydale Senior Citz 1.30 pm	2 CWA - AGM Lions 7.30 pm	3 TRA Deadline for Entries to Living Artists Week	4	5 Footy: Lilydale vs Ringarooma Disco: Darren LLOYD	6 Pony Club Karoola Oval
7	8 Retirement Units 7.00 pm	9	10 Neighbourhood Watch Fire Station 7.30 pm	11	12 Footy: Crows vs Lilydale	13 Mothers Day
14	15	16 Lions 7.30 pm	17	18 History Group TOCHC 7.30 pm	19 Footy: Lilydale vs Bridport Fancy Dress: Disco	20
21	22 Lilydale Online Community Forum 7.30pm Mary Walsh	23	24	25	26 Footy: Lilydale vs Winnaleah	27
28	29	30 Red Cross 11 am	31			

Every Monday: *Valley Voices: Uniting Church, Main Rd, 7.30 pm* Every 2nd Monday: *Fire Brigade Training: 7-9 pm 6395 1260*
 Every Tuesday: *Day Care: Main Rd 9-3, Senior Citizens: Clubrooms 1.30pm,*
 Every Wednesday: *Karoola Playgroup: Karoola Hall 10 am, Tai-Chi: Uniting Church Hall 9.30 am, Lilydale Playgroup: Anglican Church 10-12*
 Every Thursday: *Day Care: Day Care Centre Main Rd 9-3 • Every Friday: Senior Citizens Bowls: Clubrooms 1.00pm*

Lilydale Emergency Directory:

Fire: 000

Police: 000

Ambulance: 000

Launceston General Hospital: 6348 7111

Poison Information Service: 131126

Doctor: 6395 1455

6395 1258 AH

Pharmacy: 6395 1336

Need a Fire Permit, contact one of these people:

AUSTINS ROAD/ROWLEY HILL ROAD

Permit Officer – Bob Smith Ph: 0428 954 194

Permit Officer – Shane Coleman Ph: 0407 263 120

LOWER TURNERS MARSH/BANGOR/KAROOLA

Permit Officer – Jeff Tonkes Ph: 6395 4495

0418 368351

LEBRINA

Chief & Permit Officer – Mark Wilson Ph: 6395 6179

Permit Officer – Robert Hawes Ph: 6395 6270

LILYDALE

Chief & Permit Officer – Kim Coleman Ph: 6395 1260

PIPERS BROOK

Chief & Permit Officer – Peter Harley Ph: 63827181

Permit Officer – Ian Sauer Ph: 6382 7179

PIPERS RIVER

Permit Officer - Andrew Francombe Ph: 6395 4391

0418 133 917

Permit Officer - John Hurst

Ph: 6382 7138

TURNERS MARSH/FINGER POST HILL

Chief: Leon King Ph: 6326 4363 0428 435 296

Allison King Ph: 6334 4106 0419 316 964

Bob Smith Ph: 0428 954 194

Lilydale District Progress Association Inc
PO Box 3
Lilydale, TAS 7268

Editing, Layout & Distribution:
Jayne Saddington
Ph: (03) 6395 1598
Fax: (03) 6395 1129
E-mail: lily_progressive@yahoo.com.au

The Lilydale Progressive is published monthly from February to December by the Lilydale District Progress Association Inc. Letters to the Editor (up to 200 words) and other copy may be left at the Lilydale Pharmacy. Articles may also be forwarded on floppy disk in any text format or via e-mail to:
lily_progressive@yahoo.com.au

Advertisers Please Note:

When submitting a new ad please indicate in writing, how many times you want it to be published. Ads received without notification as to times and issues will be repeated, and charged accordingly, until a notice of discontinuation has been received. This is not a threat but a sincere plea to make the editor's life easier. If you are interested in advertising in the next issue of the Lilydale Progressive, please contact the editor to discuss your requirements.

Current Advertising rates:

1/6 page	\$20	per issue
1/3 page	\$30	per issue
1/4 page	\$25	per issue
1/2 page	\$50	per issue
Full Page	\$100	per issue
Classifieds:	\$1	per issue

Classifieds



FOR SALE

Potted Fuschias in bloom \$2.50.
Indoor Plants. Mixed Daffodils 10 for \$2. Blue Peruvian Scilla 4 for \$2.00. Gladiolius 6 for \$2.00. Lilliums 4 for \$2.00

Ph: 6395 4119

Give Away – Wardrobe, older style solid, heavy construction – you collect.

Ph: 6395 1098.

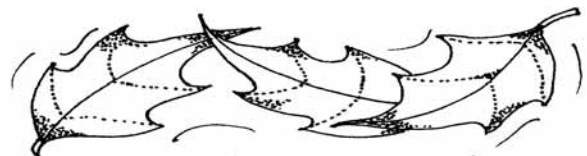
'95 EXC MAGNA Wagon, auto white, t-bar, A/C, P/S, C/L, Rego Oct. low kms, new tyres, plus extras, excellent condition, \$5,700 ono.

Bronze sliding window, \$90, stainless flue fit for rangehood, new \$100. Phone 63 95 4420

Matching saddle blanket (as new) \$40

Jodphurs \$5

Ph: 6395 1276



BARRETT'S



BARRETT'S COACH TOURS & ROSES TRAVEL INVITE

YOU TO JOIN THEM ON THE FOLLOWING DAY TRIPS AND EXTENDED TOURS

AGFEST: Friday 4 May 2007 Coach Travel departing Scottsdale 7.45am. picking up Lilydale & Launceston \$20pp

LIAWENEE OPEN DAY: Sunday 20th May 2007 Join us for a trip to the highlands see how the inland fisheries operate their trout spawning programme. A very interesting day for all with plenty of activities for kids & adults including helicopter sight seeing flights over the picturesque highlands. \$30.00 adults \$15.00 Kids

15 DAY MARREE CAMEL RACE OUTBACK TOUR - Departs 1 July 2007.

Tour cost: \$3550.00 pp twin share, includes TT Line, motel accom., Meals & entries as stated in itinerary, travel insurance, Luxury coach travel. **Itinerary available** – contact office.

15 DAY MARREE CAMEL RACE OUTBACK TOUR - Departs 1 July 2007.

HIGHLIGHTS: Wadalata Cultural Centre, Pt Augusta, Woomera, Roxby Downs, Olympic Copper Mine, Oodnadatta Track, Marree Camel Races, Leigh Creek, Strzlecki Track, Moomba Gas Field, Innamincka Cooper Creek Cruise, Cullyamurra Waterhole, Burke&Wills Dig Tree Thargomindah, Euro Date Farm, Bourke, Cobar Tour, Hillston Cotton Gin Griffith and more. Tour cost: \$3550.00 pp twin share, includes TT Line, motel accom., Meals & entries as stated in itinerary, travel insurance, Luxury coach travel. Itinerary available – contact office.

ROSES TRAVEL, Licence No TAS043, NOW HAVE AN EXTENSIVE RANGE OF MAPS FOR SALE – TASMANIA AND INTERSTATE as well as camping guides (all States), holidaying with cats & dogs and travel diaries. DON'T FORGET WE CAN DO YOUR TT LINE BOOKINGS (no extra charges). International Travel Consultant available to assist you with all your travel requirements – visas etc. (Secure sites for credit card payment) Travel Insurance & Gift Vouchers also available.

PH 03 6352 2186 FAX 03 6352 2268 Email: barrettscoaches@hotmail.net.au